



DART
CLEVER MOVE
PORI

Port of Pori Handbook



Jump on board!



Our dynamic and modern port in Pori is full of activity.

The conditions are naturally favourable: little ice, plenty of water, hardly any islands and a short pilotage. We are familiar with all categories of goods, which enables us to serve all vessels sailing the Baltic Sea.

For us, customer-orientation lies at the core of thriving activities. We react to customers' wishes quickly and continue to develop our services. Cooperation is essential for the development of operating methods. Working with our trusted partners, we offer a range of port services that make the Port of Pori an attractive place to visit.

The Port of Pori is a great environment for Finnish industry and logistics. In addition to the forest and metal industries, our infrastructure is excellently suited to operators in the recycling industry. The new LNG terminal is a good example of the area's investments in a sustainable future.

We are one of the few ports with hundreds of hectares available for growth and development. Whether you represent industry, port operations, a shipping company or brand new activities, we welcome you to pilot your business through the Port of Pori!

Sari De Meulder

Managing Director

Tel. +358 (0) 400 568 501



Port of Pori Ltd.
Merisatamantie 4
FI-28880 Pori
info@portofpori.fi



portofpori.fi



Pori - Gävle **12 h** ■ Pori - Hamburg **2,5 days** ■ Pori - Antwerp **5 days**



Your container logistics provider

OLLONQVIST
1955
TRANSRUNNER
★ PORI ★
YHTIÖT

Luotettava Kumppani

AAA[®]
Highest Creditworthiness
© awarded 2016

www.transrunner.fi

YLI PUOLI VUOSISATAA
SATAMASUUNNITTELUA

 **Insinööritoimisto
Matti Pitkälä Oy**

KIELOTIE 5 Puh. 010 8322 200
FI-01300 VANTAA www.pitkala.fi

WELCOME to The Port of Pori

Port of Pori Ltd is a limited liability company that provides leasing, vessel, crane and conveyor services.

Port of Pori Ltd comprises three ports: the Mäntyluoto port area, the Tahkoluoto deep-water port area and the Tahkoluoto chemicals harbour.

We handle dry and liquid bulk products, containers, large and heavy project cargoes, as well as metal and forest industry products.

The Port of Pori infrastructure and capacity are designed to support companies and their growth. We aim to be the most energetic and energy-efficient port in the north.



Our key services:

- Vessel services
- Crane services
- Area lease and maintenance
- Traffic and safety services

High quality infrastructure.

DESTIA
BUILDING THE BIGGER PICTURE

3PL

www.3pl.fi

Logical centre for logistics

The Port of Pori is accessible by an excellent sea route but also by efficient rail and road connections.

The Port of Pori lies within easy reach by sea, as well as by land from all parts of Finland. Unrestricted trunk road access and excellent rail connections also make the Port of Pori an ideal location for large project transportations.



Electrifying the rails!

The rail connections will further improve when the rail line to the port is electrified in 2018, making logistics increasingly cost-effective. This is a great example of the fruitful cooperation between Finnish industry, its customers, the Finnish Transport Agency and the Port of Pori.



SATAMATIETO

www.satamatieto.fi

Rail connections
From Pori to Russia 8 h



Your partner in
port logistics

VR TRANSPORT

365 – we're open year-round!



The ice conditions of Pori are among the most favourable in the north, and we are able to provide service year-round.

Pori offers the best winter port in Finland. The sea rarely freezes over here.

Despite the northern location, the average annual temperature is +5°C. Owing to relatively mild winters, from the viewpoint of seafaring, the ice and snow conditions are the most favourable in Finland.

Thanks to the advantageous conditions, winter arrival is also inexpensive, since there is no need for a robust icebreaker fleet.



EcoPorts Finland Oy
+358 (0) 40 519 0445
www.ecoport.fi

Agency services world wide.
Now also in Pori.



MERIAURA

MERIAURA GROUP - in the frontline of developing sustainable shipping



ALFONS HÅKANS
TOWAGE • SALVAGE • ICEBREAKING • HEAVY TRANSPORT • SHIP REPAIR YARD

PORI HARBOUR TOWAGE
24H DUTY PHONE +358 400 591 560

port.pori@alfonshakans.fi • www.alfonshakans.fi

**Winter in Pori is just
an extension of Summer**
— We're always open

 **Optimaint Oy**
INDUSTRIAL MAINTENANCE

www.optimaint.fi
+358 40 051 3633

Electrical and mechanical maintenance and modernizations

All electrical work requiring SI certificate and supervising

Administration of LPG usage

Thermal imaging

ARROW Maint-maintenance system

LED lightning solutions

Deep enough!



**Don't worry,
YOU WILL FIT!**



With a draught of 15.3 metres,
the Port of Pori is one Finland's
deepest ports.

A deep fairway gives our customers a considerable advantage, especially in the transportation and port handling of large volumes. The Port of Pori is a turntable for the Gulf of Bothnia, handling large volumes and vessels. Transshipment at the port is efficient, feeding the material onto smaller ships that cover the last leg to the destination.

15,3m

Solutions for oil products and chemicals
transportation and storage.



ATOR
CONSULTANTS OY

Oil and chemical products storage is our special know-how as well as designing and building storage caverns. We offer project management, risk analyses, simulations and engineering work.



mobile +358 400 770 094 | info@ator.fi | www.ator.fi



LogiWin

- Port Planning
- Logistics and Shipping Consulting
- Development studies of supply chains of all cargoes

mobile +358 40 551 6679 | info@logiwin.fi | www.logiwin.fi

24 h

Around the clock.

The Port of Pori offers pilotage every day of the year and under all weather conditions.

Safely into the port

Finnpilot provides all pilotage services in Finland. A pilot is a professional in maritime safety, who ensures a safe and efficient passage for vessels to and from the port. A pilot is also a local expert who can provide the customer with important information about the port's conditions and operations. Pilots have worked as ship captains, and they have extensive experience of maritime operations and different types of vessels. They know what is needed to bring a vessel safely into port.

"The Port of Pori is, in many respects, a pleasant operating environment for pilotage. Since the port is surrounded by deep waters, the pilotage distances are short and the waters remain largely open even in winter. This makes for quick unloading and short port visits. Moreover, even very large vessels can be safely guided into the Tahkoluoto port area thanks to the favourable conditions in Pori.

The seafaring business continues to develop, and digitalisation, for one, is gaining prominence. For port services to keep up to date, cooperation between the port and pilots must work

seamlessly. The Port of Pori is a great example of an environment where the port and pilots work together to develop operations. The flow of information is good, and new operating models and solutions are developed at the same table. In the case of the LNG terminal, for example, we jointly sought good practices from other European ports. Cooperation is a good foundation for building safe and durable operating models."

Kari Kosonen

CEO

Finnpilot Pilotage Oy

Pilotage requests can be made by all vessels in need of pilotage. Pilotage orders must be placed three hours before arrival at the pilot boarding point and two hours before departure from the port.

Finnpilot in figures

- 1/3 of arrivals in Finnish ports are assisted by Finnpiilot
- 23,463 pilotage assignments in Finland in 2016, of which 926 in Pori
- 140 pilots in Finland, six of them in Pori
- 60 pilot vessels in Finland
- Three pilot vessels (two cutters and one fast pilot boat) in Pori
- Over 6,500 person-years of experience in maritime operations



Hacklin

Hacklin, the main operator of the Port of Pori since 1908 – at your service.

Oy Hacklin Ltd provides logistics services at the Port of Pori and is known for its reliable and competent operations in Finland and abroad.

Hacklin is responsible for unloading and loading bulk cargo ships of all sizes, from coasters to ocean going cape size vessels. The personnel, who specialise in bulk goods, are responsible for storage, terminal services, freight forwarding, transport, containerisation of bulk cargo, bulking and packing. The services offered also include material handling as a door-to-door delivery.

Hacklin Seatrans has operated a weekly feeder service for containers and break bulk between the Port of Pori and Hamburg, Germany since 1986. Worldwide container import and export services are organised as well as transports between third countries. Door-to-door deliveries in containers between Finland and Europe are also available. All container handling in the Port of Pori is operated by Hacklin.

One main focus of Hacklin's services is on Project Logistics. Due to excellent storage possibilities and experienced personnel, the Port of Pori has grown to be the most efficient port for project cargo in Finland. The port is frequently used as a hub for

transports of oversize and heavy cargoes from all around the world. Hacklin also provides consulting and planning services for managing large-scale project transports. Supercargo services and supervision of project transports are handled with expertise around the world.

Timber is one of the main products to pass through the Port of Pori. Hacklin handles the stevedoring and freight forwarding as well as storage and port operations for timber with expertise gained from years of experience. The volume of timber shipped in containers has been growing rapidly last years.

Hacklin offers also Storage Services. The company has approximately 140,000 m² of covered storage facilities in the Port of Pori. In addition, there are hectares of open areas available for storage purposes. Hacklin offers both short and long-term storage options to its customers. Tailor-made solutions to optimise the needs of the customers can also be offered.

Hacklin operates globally, and provides also agency services in the Port of Pori. The Shipping Services Department takes care of all the tasks and assignments of a port agent on behalf of the ship-owners.

Services of the Port of Pori

- rental of field and storage space
- sales and rental of plots
- vessel services
- mooring and unmooring
- water, electricity
- crane services

Cranes at the Port of Pori

MÄNTYLUOTO

- 200 tonnes
- 144 tonnes (mobile)
- 60 tonnes
- 53 tonnes
- 50 tonnes
- four 40-tonne cranes
- two 10-tonne cranes

TAHKOLUOTO

- 40 tonnes
- 32 tonnes
- loader 1,500 tonnes (m³)/h



Efficient vessel services



The Port Control of Port of Pori Ltd provides all the vessel services.

To order services, please call
Tel. +358 (0)44 701 2623 or send an email to
valvojat.satama@portofpori.fi.

We offer versatile services to vessels visiting our port.

Our quick professional services ensure efficient port time for vessels. We offer Finland's most efficient infrastructure for the handling of bulk material and break bulk, as well as highly efficient unloading.



Info



- Vessel mooring and unmooring must be ordered from Port Control at least two hours before the required time.
- Waste disposal
- Icebreaking services must be ordered from Port Control at least two hours before arrival at the port.
- Orders for water supply must be placed at Port Control one hour before the required time of supply. Water is supplied around the clock.
- Power supply. Temporary power supply connections are available for repair or maintenance. The maximum load allowed is 32/63A. To place your order, please call +358 (0) 44 701 2609.
- Pilotage services www.finnpilot.fi



Sea tows • Ice-breaking • Salvage services

Rauma Cata provides towage services in ports, at sea and on separate commissions in Finnish coastal regions, on the Baltic Sea and in the whole of Europe. The company boasts a fleet of nine tugboats, two barges and is complemented by wide contacts with other Finnish and international towage companies.

RAUMA CATA
YOUR RELIABLE PARTNER AT SEA

Rauma Cata
Kalliokatu 2 T 40
26100 RAUMA

Tel. +358 2 822 7900 (Office hours)
Tel. +358 44 022 7900 (Service 24/7)
Fax +358 2 822 7944

raumacata@raumacata.fi

www.raumacata.fi

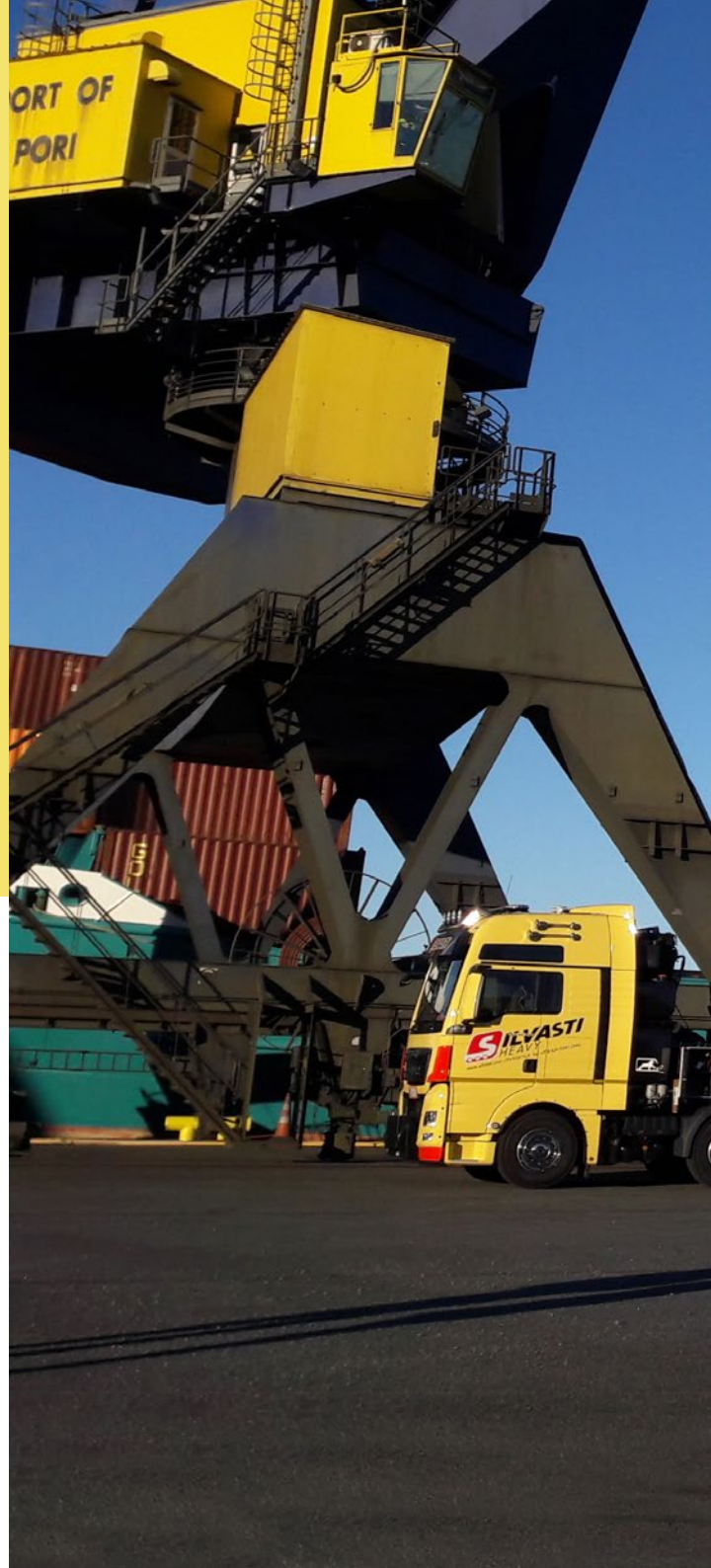


Lift it up!

We offer Finland's most diverse port equipment for hoisting loads of up to 200 tonnes.

We provide a wide range of crane services for various needs. We can handle anything from individual hoists to large flows of items.

In addition to a huge hoist capacity, we have enough space to handle and store large project cargoes.



We offer:

- **13 cranes**
- **One loader**
- **One stacker conveyor**



Experience the progress.

mobile.harbour.crane@liebherr.com
facebook.com/LiebherrMaritime
www.liebherr.com

LIEBHERR



Before entering the Port of Pori, please watch our safety video.



Safe haven

The safety operations at the Port of Pori are based on a comprehensive approach to safety and on the principles of continuous improvement. This means improving both system operations and the well-being of our staff. To achieve its goals, the port continues to invest in training its staff as well as its customers and interest groups.

Port of Pori Ltd complies with the ISO 9001 standard for quality management, the ISO 14001 standard for environmental management and the OHSAS 18001 standard for occupational health and safety. This requires all our employees and cooperation partners operating in the Port of Pori to comply with the instructions and regulations drawn up to ensure that the objectives of the standards are achieved.

Our safety equipment and devices meet exacting standards, our employees are trained for their duties, and our machines are inspected and serviced regularly.



**TAMPEREEN
KAUPPAKAMARI**





REWENDA

INSURANCE BROKER

www.rewenda.fi

HUNTSMAN

Enriching lives through innovation

www.huntsman.com

Green port

**Welcome to the clean
Bothnian Sea!**



**PORI
ENERGIA**

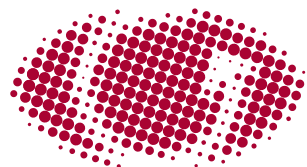
www.porienergia.fi



Strict environmental requirements are no hindrance to developing businesses at the Port of Pori. Taking care of environmental matters is a central part of the quality management system of the Port of Pori.

The City of Pori is steering towards a carbon-free future, and its energy strategy emphasises the use of biofuels. Among other things, the region's sustainable competitiveness is boosted by high-tech recycling competence and Finland's first offshore wind farm to be built in Tahkoluoto.

The gas pipes of the Tahkoluoto LNG terminal run along industrial premises, and are thus easily accessible to industry. The terminal contributes significantly to the Nordic gas ecosystem.



VISY

Complete
Access and Area
Control Systems

www.visy.fi
sales@visy.fi





Finland's first LNG terminal

Easy access to LNG is a major competitive factor for industry in the Port of Pori.

In autumn 2016, Pori became home to Finland's first LNG import terminal, significantly improving the availability of liquefied natural gas in Finland.

Liquefied natural gas meets the requirements of the marine sulphur directive, as well as the tighter future restrictions on emissions. It can also be used to replace oil-based fuels in industry, energy production and heavy road traffic.

The terminal diversifies and enhances the Finnish energy market and enables liquefied natural gas deliveries to industry, maritime transport and heavy traffic that are not linked to the gas network.



For reliable
LNG
supply

SKANGAS.COM

Skangas

Tahkoluoto offshore wind farm

The world's first offshore wind farm designed for icy conditions.

Suomen Hyötytuuli Oy, a wind power producer, is constructing the world's first offshore wind farm for icy conditions outside Tahkoluoto in Pori. The wind farm will produce clean domestic energy starting in autumn 2017. The volume produced by the farm's ten turbines is equivalent to the annual energy consumption of some 8,600 electrically heated single-family homes.


Established in 1998, this pioneer in Finnish wind energy provides wind energy to its owners: Helen Ltd (Oy Mankala Ab), Jyväskylä Energy Ltd, Lahti Energy Ltd, Lappeenrannan Energia Oy, Pori Energia Oy, Tampereen Sähkölaitos, Turku Energia Oy and Vantaa Energy Ltd.

■ www.hyotytuuli.fi



C & C PORT AGENCY FINLAND OY LTD

www.portagency.fi



"We have been working in close cooperation with the Port of Pori during the wind farm construction project. Our office is located in Mäntyluoto, in the immediate vicinity of the port. The land area we leased for turbine component storage will also be used during the installation phase. At best, we will have over one hundred people and over ten vessels working offshore during installation. To successfully complete this project, we need good, efficient port services."

Toni Sulameri
Managing Director
Suomen Hyötytuuli Oy

EXTRAMARE

Excellency in Marine Projects

www.extramare.net

Space for industry

NORTHERN SAWN TIMBER FROM FINLAND TO THE REST OF THE WORLD

Westas Group, a sawmilling group based in southwestern Finland, is one of Finland's largest private wood-processing companies. The group's sawmills in Koski and Pori annually produce nearly 450,000 m³ of spruce and pine sawn timber. The majority of the products are manufactured for the export market. Pori offers easy access to the international market. Westas Group exports products to thirty different countries through the Port of Pori.

"The Port of Pori could hardly be better located from our perspective," says Pekka Kopra, Managing Director of Westas Group. "The port can handle both traditional, conventional shipping as well as container transports, which we are using increasingly. The port also offers suitable storage space, which further facilitates our operations. The storage option enables us to deliver goods to the port in advance of shipment, if required."



SOLID EXPERIENCE, THE LATEST KNOW-HOW

We are your trusted partner in timber business. Our location on the west coast near the main timber shipping ports, enables us good connection to countries nearby and overseas countries. Customer tailored timber is standard to us.



ISOJOEN SAHA

www.isojoensaha.fi



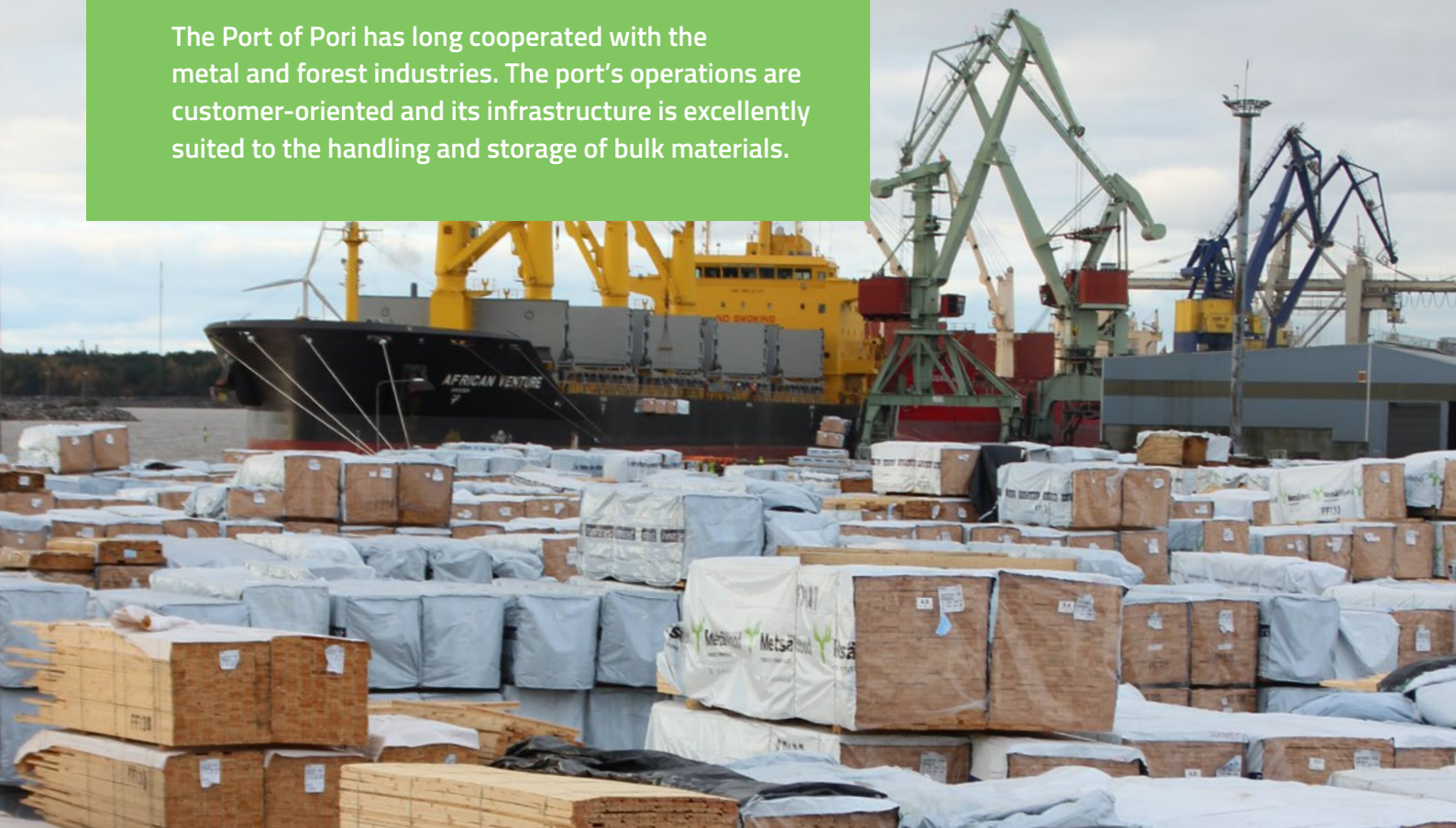
Westas Group is one of the largest private wood processing companies in Finland. The sawmills are located in Koski ja Pori.

www.westas.fi



Vision on wood.

The Port of Pori has long cooperated with the metal and forest industries. The port's operations are customer-oriented and its infrastructure is excellently suited to the handling and storage of bulk materials.



Powering a better future since 1834

Wärtsilä is a global leader in complete lifecycle power solutions for the marine and energy markets. By emphasising technological innovation and total efficiency, Wärtsilä maximises the environmental and economic performance of the vessels and power plants of its customers.



Lead your business from the best place

The Port of Pori functions as a platform for growth and a logistics centre for all types of business. The capacity and infrastructure of the area support business and growth.

We want to serve the needs of large-scale industry, logistics and trade by offering cost-efficient and reliable solutions – preconditions to success. We are one of the few ports with enough room for development and expansion in accordance with our customers' needs. In all, more than 200 hectares of building land are available for new business.

We have vacant plots and office premises for rent at the Mäntyluoto and Tahkoluoto port areas. We are responsible for the sites' IT systems, basic services, and traffic arrangement. Companies operating in the area provide cargo-handling services. IT and power supply services, as well as water supply and sewerage, can be negotiated with the City of Pori. The port's long tradition ensures a professional and committed workforce for port and logistics operations.

**Building land available
for new business**

An aerial photograph of the Port of Pori. In the foreground, a large, flat, brownish-grey area of land is visible, which is the vacant plot mentioned in the text. To the left of this plot is a body of water with some greenery. To the right, there are various industrial buildings, including large blue-roofed warehouses, and a parking lot with several vehicles. In the background, the sea is visible under a clear sky. A yellow callout arrow originates from the text 'Building land available for new business' and points towards the vacant plot.



We have plots for:

- industry
- terminal
- logistics
- container traffic
- raw wood



Building together



Oteran Ltd. is a development oriented infrastructure growth company which is grounded in project management concept and a lean-based production system. We carry out road, street, water supply, new bridge and bridge repair, port and demanding concrete structure, as well as telecommunication network. The work is carried out based on the needs and specifications of the client.

Oteran is actively involved in the development and reform of the whole infrastructure business.

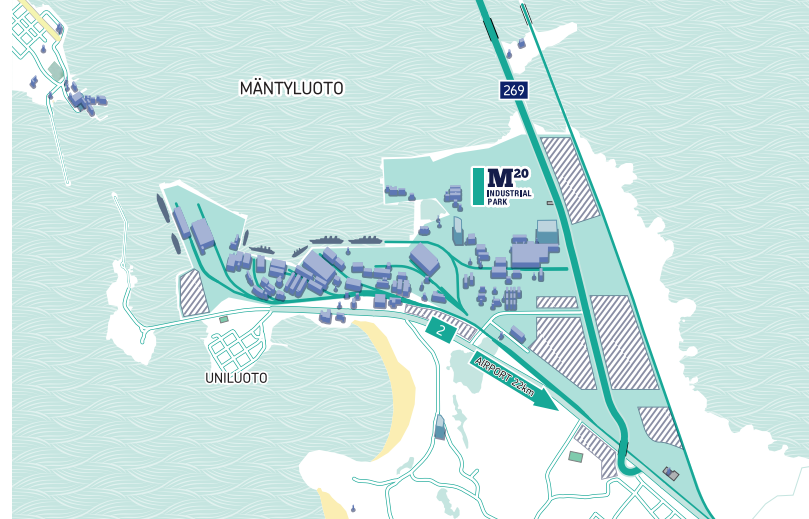
We find sustainable solutions with our partner network and client to help their surrounding community to thrive.



www.oteran.fi

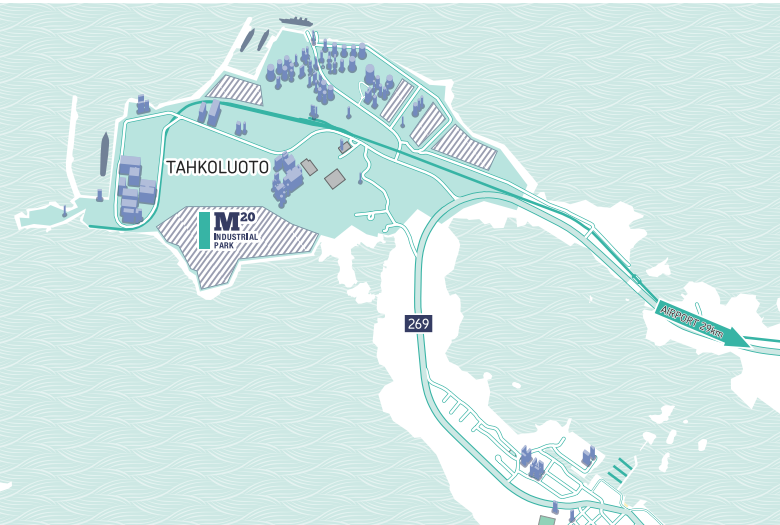


M²⁰ INDUSTRIAL PARK



The M20 Industrial Park operates efficiently. International transport connections and active business co-operation form a network for companies, which is a formula for success.

The M20 Industrial Park operates in the immediate vicinity of the Port of Pori, on the coast of the Gulf of Bothnia. The area is being developed into a hub, with excellent transport connections to all over Finland, Russia, Scandinavia and continental Europe.



The M20 Industrial Park is divided operationally into three business areas – the industrial and logistics areas at Mäntyluoto and Tahkoluoto, and the Peitto recycling park. The extensive areas of land and deep fairways facilitate a distribution centre model, or hub.



M20 INDUSTRIAL PARK

– The most extensive industrial park on the Baltic





FINLAND TANK STORAGE OY

Finland Tank Storage corporation operates a cavern in the Port of Pori Finland. The cavern is suitable for oil products such as middle distillates, fuel oil and crude oil. We provide tailored and flexible service for customers worldwide including handling of the product.

The cavern is a "one product" storage with a capacity of 300.000 m³. An option to build separate shoretanks on the site allows to store different products with 2 pipelines, one to oil jetty (10 m draft) and one to deep harbour (15,3 m draft).

Rikhard Zitting
Terminal Manager
+358 40 1273 008

Michael Ek
Managing Director
+358 400 520 629

www.finlandtankstorage.fi

Need of storage – choose us





Tahkoluoto has

140
hectares
of free land.

- Sites in excess of 10 hectares total more than 100 hectares, and smaller sites total over 30 hectares.
- Artificial fill continues to expand the land reserve.

TAHKOLUOTO

– energy supply guaranteed

Plenty of free building land is available at the Tahkoluoto chemicals harbour and at the deep-water port area.

The areas are located near quays, and companies can make use of all the services available. There is also a railway connection.

A special feature of Tahkoluoto is the availability of energy, liquefied natural gas, and fuel. Finland's first LNG terminal is now complete at the chemicals harbour, and there is room for newcomers in this attractive operating environment.

The indisputably largest advantage of the Tahkoluoto deep-water port is that its 15.3-metre depth also allows mooring and handling of Cape and Panamax vessels. The port's loading capacity is up to 1,200 tonnes/hour and unloading capacity approx. 2,000 tonnes/hour, depending on the type of goods. The deep-water port is also well equipped for bulk goods transshipment functionality.

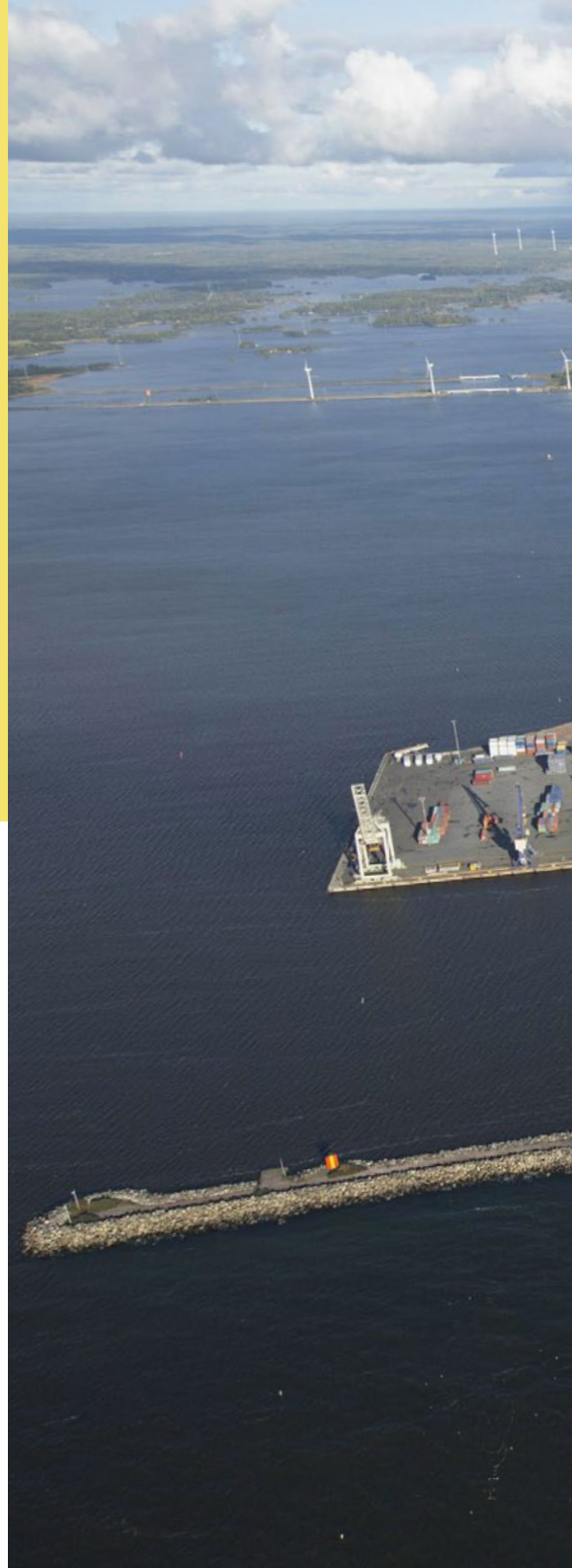
MÄNTYLUOTO

– a stable base for business

24 hectares of vacant building land are available at the Mäntyluoto port area.

A nearly finished 6-hectare area and the adjacent 20-hectare area are located in the immediate vicinity of a railway yard and Finnish National Road 2. Owing to the sandy soil and bedrock, building on these industrial areas is cost-efficient. For example, the Kirrisanta grounds at Mäntyluoto have been filled with fly ash, providing an excellently stable base. Fresh water intake from Kokemäenjoki River is also possible at Mäntyluoto.

The area can be divided into plots of different size and shape according to the customer's wishes. The area transfer agreements are quite advantageous. Industrial areas are leased based on long-term contracts.





MÄNTYLUOTO OFFERS

24 hectares of free space

- **Stable ground**
- **Competitive contracts**

The future with us!

The world is changing at an incredible pace. At the Port of Pori, we do not approach the future passively. Instead, we actively participate in forming the future.

Join us in planning and creating
a better tomorrow!

PORT
CLEVER MOVE
PORI



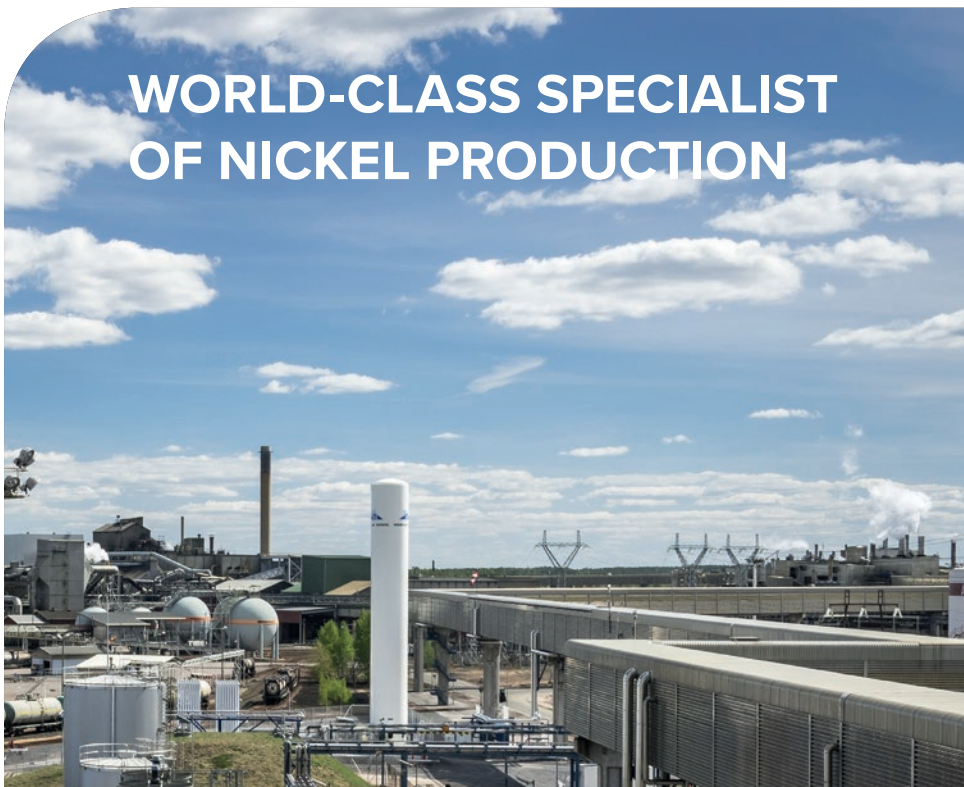
NORNICKEL

HARJAVALTA

Norilsk Nickel Harjavalta Oy is a significant and diverse producer of nickel metals and chemicals.

Norilsk Nickel Harjavalta is one of the world's leading nickel producer because of modern technology, responsible EHS operations (environment, health and safety), top-class research and process know-how.

WORLD-CLASS SPECIALIST OF NICKEL PRODUCTION



www.norilsknickel.fi



Stevedoring • Warehousing • Containers • Ship agency



www.hacklin.fi



Pori • Hamina • Kotka • Helsinki • Hamburg • Moscow • St.Petersburg • Shanghai