

The image shows a wide, snow-covered landscape under a clear blue sky. In the foreground, there is a dense forest of evergreen trees covered in snow. In the middle ground, a line of smaller trees separates the forest from a distant industrial facility. The facility includes several buildings, a tall chimney, and a large, white, conical structure. The sky is a gradient of light blue, suggesting a clear day. The overall scene is peaceful and serene, contrasting the natural environment with industrial activity.

NW BOLIDEN

Boliden Kevitsa

**Metals for
generations to come**

METALS FOR GENERATIONS TO COME

Boliden is a global metals company with strong roots in the Nordic region. The company is a responsible company specialising in exploration, mining, smelting and recycling. Boliden's mission is to provide the metals essential to improve society for generations to come. Thanks to technological development, Boliden's productivity and operational sustainability are both at the highest level.

HEAD OFFICE

SMELTERS

MINES



5
MINES

5
SMELTERS

6 000
EMPLOYEES

MORE THAN **100**
YEARS OF EXPERIENCE

OPERATING PROFIT
78 billion
SWEDISH KRONOR

BOLIDEN KEVITSA

Boliden Kevitsa is one of the largest mineral discoveries ever in Finland. Located in Sodankylä, the multi-metal mine extracts around 10 million tonnes of ore annually. Our main products are copper and nickel, but also smaller amounts of cobalt, platinum, palladium and gold are produced. The concentrates are mainly delivered to Boliden's own smelters for further processing.

WATCH
OUR VIDEO!



VISION: To be the most climate friendly and respected metal provider in the world.

Boliden is an industry pioneer in the development of low-carbon metals. Our goal is to reduce carbon emissions and increase biodiversity. The main environmental aspects of Boliden Kevitsa are dust management, treatment and storage of mining waste and energy consumption. Boliden is responsible for the landscaping and restoration of closed mining areas. The restoration of the area to its natural state will be planned and funded throughout the life of the mine.

**BOLIDEN KEVITSA
IS WORKING
SYSTEMATICALLY
TO MINIMISE ITS
ENVIRONMENTAL IMPACT**

Boliden is committed to the UN Sustainable Development Goals (SDGs) as set by the International Council on Metals and Mining (ICMM).





Boliden Kevitsa's electric trolley line significantly reduces the fuel consumption of the haul trucks and carbon dioxide emissions from mining operations.

BOLIDEN VALUES:

CARE

We trust in people and care about the safety and wellbeing of ourselves and others. We care about the environment and climate change. We care about our business, stakeholders and society.

COURAGE

We have the courage to challenge existing ways of working, to learn and improve. We have the courage to take initiatives, make decisions and act. We have the courage to stand up for what is right and speak up if something is wrong.

RESPONSIBILITY

We are reliable, deliver on our promises and take responsibility for our actions. We take responsibility to act as ambassadors for Boliden. We are responsible to make Boliden better through continuous improvements and innovations.



HOW BOLIDEN KEVITSA WORKS

Boliden Kevitsa is a modern multi-metal mine. We use the latest technology at all stages of the value chain to ensure the safety and efficiency of the production process.



EXPLORATION AND MINING

EXPLORATION

The search for new mineral deposits is the basis of Boliden's operations and a prerequisite for the production of metals. Only a very small proportion of exploration projects lead to the start-up of a mine.

DRILLING AND BLASTING

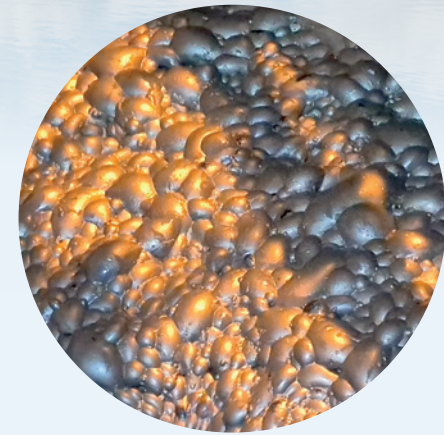
Electric and remote-controlled drilling rigs reduce the carbon footprint and improve work safety. The drilled field is charged and blasted.

LOADING AND HAULING

The blasted rock is loaded with electro-hydraulic jack excavators and transported, based on its material category, to the primary crusher and the plant or the waste rock area. Finland's first electric trolley line for haul trucks is being built at the Boliden Kevitsa open pit mine.

WATER MANAGEMENT

Boliden Kevitsa has two tailings ponds. The water from the enrichment process is recycled back into the process. The process water is purified in a water treatment plant.



CONCENTRATION

The concentration process is controlled by a plant-wide automation system.

CRUSHING

The extracted ore is crushed by primary and secondary crushers.

MILLING

Four autogenous mills grind the ore into slurry.

FLOTATION

The slurry is separated through froth flotation in stages with air and chemicals to separate the copper, nickel and sulphide minerals. Finally, the concentrates are dewatered for shipping to smelter, which is the final product of the mine. Precious metals are bound in the concentrate and separated in smelters.

COMPETENT AND MOTIVATED STAFF

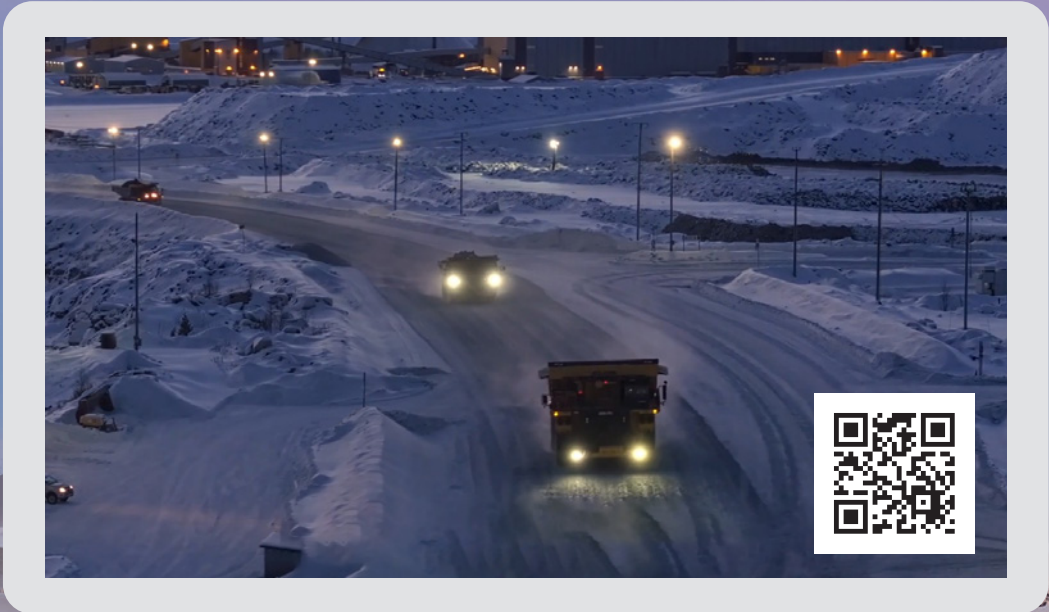
A THRIVING AND SKILLED
WORKFORCE IS A PRERE-
QUISITE FOR BOLIDEN
KEVITSA'S SUCCESS.

At Boliden Kevitsa, we encourage our employees to develop their skills and the work community. We offer a variety of tasks and a working environment that prioritises the safety, health and wellbeing of our staff. We invest in values-based leadership and diversity.

Together, we are finding new and responsible ways to make metals. Will you join us? We are looking for innovators. People with the enthusiasm, skills and ideas to make Boliden a leader in sustainability and technology.



THIS IS WHAT IT'S
LIKE TO WORK AT
BOLIDEN KEVITSA
- WATCH THE VIDEO!



580 OWN
EMPLOYEES

300
CONTRACTOR
EMPLOYEES

17 %
OF EMPLOYEES
ARE WOMEN

AVERAGE AGE
39 years



BE SAFE

Boliden wants to offer its employees a healthy and safe workplace where accidents do not happen. The goal is zero accidents at work. Boliden combines a strong corporate culture with proactive risk management - using the best technology and processes.

FIND OUT ABOUT
OUR VACANCIES ON LINKEDIN
AND OUR CAREERS PAGE AT
www.boliden.com/career



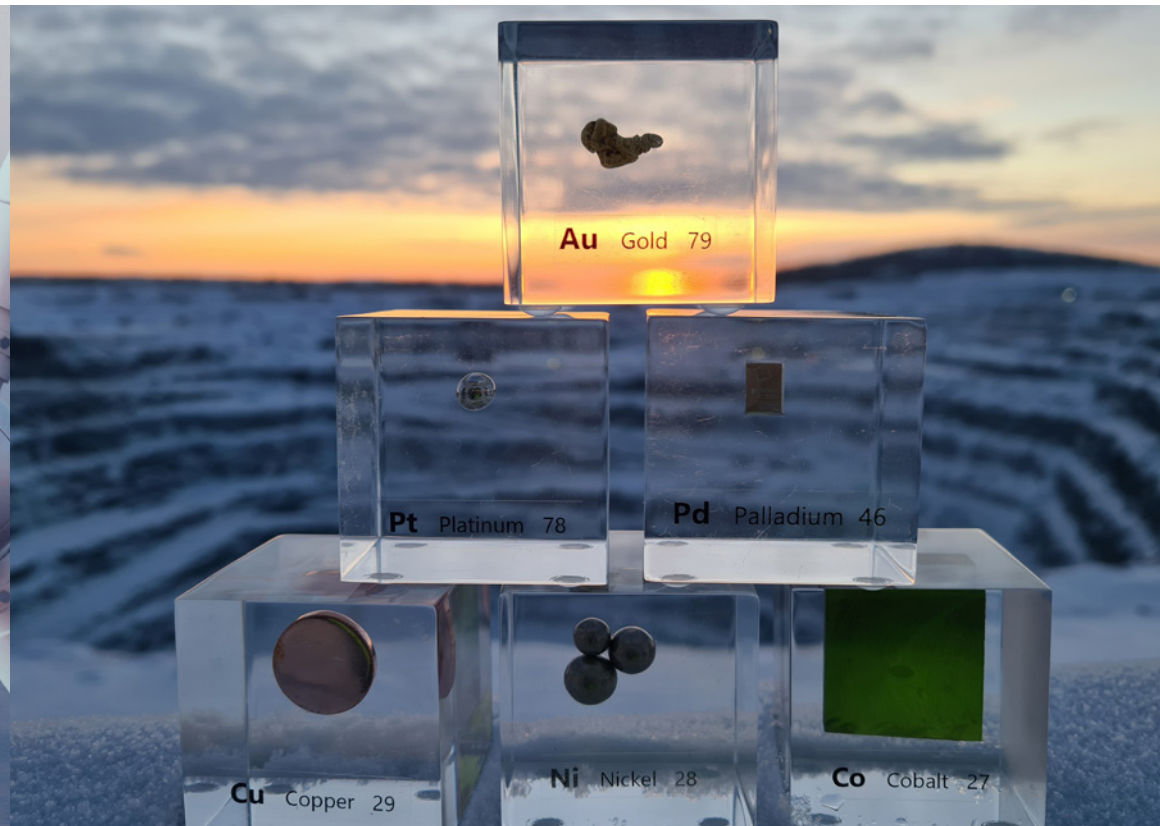
METALS ARE NEEDED TO FIGHT CLIMATE CHANGE

ECONOMIC GROWTH AND THE TRANSITION TO FOSSIL-FREE TECHNOLOGIES ARE CONSTANTLY INCREASING THE DEMAND FOR METALS.

As society evolves, metals are being used for a wide range of purposes, for example, to increase safety, environmental friendliness and productivity. Metals are everywhere: infrastructure, buildings, energy systems, mobile phones and vehicles.

The special goal of the EU's Critical Raw Materials Initiative is to ensure the supply of raw materials necessary for producing renewable energy, smart transport, and defense and space technology. Finland has the opportunity to take a central role in solving the mineral challenge.

In 2022, Boliden Kevitsa mined 30% of the metal ores extracted in Finland. We are the largest producer of copper and the second largest producer of nickel in Finland, as well as the only producer of platinum and palladium in Finland and the largest in the EU. There are two operational cobalt mines in the EU – both are located in Finland and one of them is Boliden Kevitsa.



More than 60% of all nickel produced worldwide is used to make stainless steel. Nickel is also used in batteries, catalysts, coins, magnets and surface treatments.

Copper is highly resistant to corrosion and has antibacterial properties. Copper is an excellent conductor of heat and electricity and can be recycled almost indefinitely. There are many uses.

ABOUT 80 KG OF COPPER IS NEEDED FOR AN ELECTRIC CAR

The circuit boards in modern vehicles are made of copper, gold, silver and palladium. Lithium-ion batteries contain copper, nickel and cobalt sulphates. Catalysts use palladium and platinum. Protective zinc coatings increase the life of the vehicle.



BOLIDEN

Boliden Kevitsa

Kevitsantie 730 • FI-99670 Petkula • www.boliden.com • info.kevitsa@boliden.com

