

# GOODSTORIES

KWH LOGISTICS MAGAZINE FOR CUSTOMERS AND STAKEHOLDERS 2 | 2021



**COOPERATION BETWEEN UPM AND ADOLF LAHTI KEEPS THE WOOD FLOWS MOVING  
THE PROFESSIONALS OF KWH LOGISTICS KNOW HOW TO HANDLE HEAVY EQUIPMENT  
RAUANHEIMO HAS INVESTED IN TAHKOLUOTO  
COMPETENCE AS A SUCCESS FACTOR**



# Dear reader,

it's time for good news again.

The period of COVID-19 has taught us a lot. Among other things, we have learned how to utilize digital communications channels more efficiently to facilitate contacts between different stakeholder groups in spite of the distances between us.

Even though digitalization plays an increasingly important role in our operations, the past two years have proven that face-to-face interactions are needed and missed. Our employees working in independent roles also appreciate a good working community and being in touch with colleagues, customers and contractors. The events organized at the end of the summer were filled with a joy of reunion. They reminded us how important true encounters are and about the power of events.

The importance of communication and cooperation became even more evident under the exceptional period. The most sustainable solutions are found in close cooperation with customers. The story about pulp production at UPM Pietarsaari is a good example of this. A seamlessly functioning logistics chain also requires the professional input of our subcontractors. This is reflected on several pages of this magazine as well.

Despite the restrictions applicable during the exceptional period, we have not been treading water. We have created new ways of working even more safely and made investments as well. Pages 10–11 of this magazine tell you the story of our unique bulk terminal at Tahkoluoto that became operational in the summer.

At KWH Logistics, success primarily relies on our personnel and, lately, we have been paying even more attention to their safety, well-being and participation. The pages 12-13 of this magazine tell you more about these investments.

Our values, knowledge, transparency, safety and integrity—were developed in cooperation with our personnel. By embracing these values, we will continue to provide our customers with an even more extensive service concept and closer partnerships.

I hope you enjoy reading our magazine.

**Anna Långbacka**  
**Marketing Manager**  
**Oy M. Rauanheimo Ab**



Photo: Lassi Alanen

**Publisher:** KWH Logistics  
**Editor-in-Chief:** Markku Mäkipere  
**Editorial board:** Markku Mäkipere, Anna Långbacka, Emilia Nikkilä  
**Layout and texts:** JS Suomi Oy  
**Place of printing:** Offset Ulonen, Tampere  
**Cover image:** The new bulk terminal in Tahkoluoto / Rauanheimo / Jussi Miikkulainen

**Address source:** The customer register of KWH Logistics. If you do not want to receive this mail in the future, please contact [marketing@kwhlogistics.com](mailto:marketing@kwhlogistics.com).

# FLASH NEWS

## PORT OF KOKKOLA INAUGURATED THE 14-METER DEEP FAIRWAY

The port of Kokkola deepened the fairway from 13 meters to 14 meters during 2018-2020. The 63 million euro project was already completed during autumn 2020 when the fairway was introduced but due to corona the official inauguration was held on the 1st of September 2021. The fairway was inaugurated by the Traffic Minister Timo Harakka via remote connections in the Port of Kokkola. The Finnish Transport Infrastructure Agency, the City of Kokkola and the Port of Kokkola all participated in the event along with other invited guests.

The inauguration party for invited guests took place in a party tent by the sea at Meripuisto in Kokkola. The deepening of the fairway opens up possibilities for even bigger vessels to visit the port and increases the amount of cargo capacity. In addition to Panamax size vessels, one can also see gigantic Capesize vessels in the Port of Kokkola. Larger cargo capacity improves the cost efficiency of industrial transports.

Photo: Janina Hyytinen



Photo: KWH Logistics

## KWH LOGISTICS BUSINESS GOLF

This year KWH Logistics organized three Business Golf events for customers and stakeholders. Earlier this event was organized only in Kotka but this year it was organized also in Naantali and Kokkola. In addition to the previous program this year the events were for both beginners and experts. Beginners had the chance to test the sport with the guidance of a Pro. The events were a success and we will continue organizing them in the future. We would like to thank all the participants for pleasant and successful events. We hope to see you again next year!



Photo: KWH Logistics

## POWER TRUCK SHOW -EVENT IN ALAHÄRMÄ

KWH Logistics attended the Power Truck show this summer for the first time. This annual event is a major Finnish trade fair and truck show of the transport industry that has drawn crowds from all across Finland. KWH Logistics was represented in the family friendly event by personnel from our different subsidiaries.

This event is important to us among other things especially from the employer branding perspective and it was nice to see the great interest towards our business group. The organizers of the Power Truck Show also awarded KWH Logistics an honorary award for best stand.







In addition to port operating, Rauanheimo provides also other services to the industry.

## OPEN-PIT MINE FILLING PROJECT

In addition to port operating, Rauanheimo provides also other services to the industry. One example of this is the filling project of Outokumpu's Kemi Mine, which was completed in the spring 2021 and involved filling the open-pit mine with 720,065 tonnes of waste rock from the mine. As additional work, 11,000 tonnes of crushed rock was moved in storage. The project went well and was completed two weeks ahead of schedule.

– A special challenge posed by the work was ensuring occupational safety in all weather conditions as well as Outokumpu's strict weight requirements for the loaded tonnes, says Pasi Salmela, who is a Site Manager at Rauanheimo, the company that carried out the project.

Fully loaded dumpers were driven down the serpentine roads of the open-pit mine to the dumping location. According to Salmela, it was extremely important to always keep the roads in good condition

– for example, the prevention of slipperiness needed to be rigorous for the entire winter season. The depressions and cracks at the dumping and pushing location were monitored around the clock and the procedure was changed if needed. The work instructions created on the basis of risk assessments had to be followed to the letter so that the high level of occupational safety required by Outokumpu's mining operations could be reached.

The project was completed without accidents or safety observations classified as dangerous situations. After the successful completion of the project, occupational safety awards were given to all participants.

Salmela also emphasises successful subcontractor selection.

– Our highly competent subcontractors Maansiirto Jänkälät Oy, Kyösti Kaihu Oy and Maanrakennus Kone Kari Oy deserve thanks for doing their work well and safely.

### The output

in the winter conditions of the North, 16 Dec 2020–13 April 2021 (76 days of work):

- 19,100 dumper loads
- 90,000 bucketfuls of a loading excavator
- 36,000 bucketfuls of a wheel loader
- more than 100,000 loads pushed down the slope at the filling locations
- operators climbed up to/down from the machines more than 6,100 times

## PROJECT44 - NEW CONTAINER TRACKING SYSTEM

Backman-Trummer has started using a new piece of software that tracks the location and movement of shipping containers. With the Project44 software, which uses the world's most powerful multimodal network, Backman-Trummer and its customers can track the progress of container shipments throughout the shipment chain.

The containers' information is recorded in the system, after which the customer will receive real-time information about their movements. Thanks to the software, which meets the strictest data protection standards, time does not need to be spent on schedule enquiries that go through multiple parties.

## MOONWAY TRUSTS ITS PARTNERS

Moonway values transparent subcontracting co-operation where both parties are satisfied and business is developed together. Transport chains are often also subcontracting chains. Each operator in the chain must be a reliable partner with whom all situations can be resolved.

– We are not personally present in our customers' premises. Instead the driver of the subcontractor transport company represents also us, says Minna Immonen, an Account Manager at Moonway. We choose our partners carefully so that we can trust the quality of the transport services.

Moonway's partnerships with subcontractors are long – some of them have lasted as long as the company has existed, since 1994. Thanks to the long partnerships, some of the employees of our close partners have worked together for more than 25 years.

## STEVENA NOW PROVIDES ALSO INDUSTRIAL LOGISTICS SERVICES

Stevena has launched a new business that serves industrial logistics customers. The new Material-Master profit centre provides large-scale industry customers with both in-house and external logistics services, such as operating warehouses and machine contracting.

Stevena's first industrial logistics customer is the large automotive industry company Valmet Automotive. Material-Master is responsible for the yard operations in the area of the car plant, which includes moving the trailers transporting car parts to the loading and unloading locations at the right time. The partnership also brings synergy benefits: Stevena carries

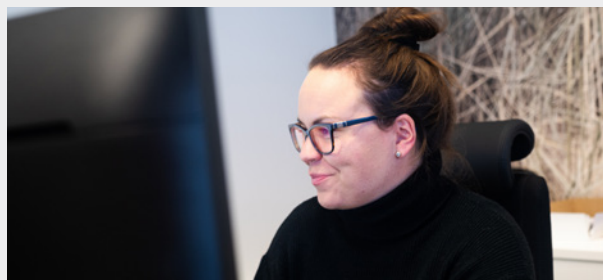


Photo: Lassi Alanen

Customers can easily find the information they need by entering the number of the container and the name of the shipping company handling the transport in the system. The information is available 24/7, regardless of time and location.

– We were surprised by how easy it is to use the software, says Roosa-Maria Aro, a freight forwarder at Backman-Trummer. The information is always up to date and it only takes a quick search to view it.



Photo: Moonway

They feel that they are close co-workers even though there is a customer relationship between the companies.

One of Moonway's most significant partners is Kuljetusliike Törmänen Oy and its sister company OMT-Tank Oy that works with tank containers. Matti Törmänen, the CEO of both companies, feels that the partnership with Moonway works well.

– Our long-lasting partnership has highlighted the parties' roles in the transport chain and their great competence in their fields – this creates a good and reliable whole.



Photo: Stevena

out port operations at the Port of Uusikaupunki, which is the port of entry for Valmet Automotive's incoming material and the loading port for completed cars.

– The new service concept is a big step in the right direction, says Janne Salonen, Stevena's Sales and Customer Manager. We want to provide our customers with a comprehensive, reliable and cost-efficient service for the management of logistics chains – not only at ports but also anywhere along the chain.





**OUR COOPERATION ABSOLUTELY REQUIRES THAT PULP PRODUCTION IS NOT INTERRUPTED DUE TO OUR ACTIONS AT ANY TIME.**

**- PEKKA PÖLLÄNEN, THE MANAGING DIRECTOR OF ADOLF LAHTI**



Juhani Seppä, UPM's Pietarsaari terminal manager, Pekka Pöllänen, CEO of Adolf Lahti, and Niko Miettinen, the Regional Director of Adolf Lahti.

### **ALHOLMA INDUSTRIAL SITE**

The nearly 200-hectare industrial site in Alholma, Pietarsaari, is a concentration of bioforest industry that includes UPM's Pietarsaari pulp mill, the Alholma sawmill and Metsä's service office as well as BillerudKorsnäs Finland's paper mill, Walki's paper processing plant and Alholmens Kraft's power plant. In Alholma, the wood from nearby areas is processed into timber, pulp, paper, paper products and energy. Woodchips are produced as a by-product. The companies' customers are located in a large area spanning from Central Europe to Japan. Every day, Alholma is the workplace of 1,200 people, a quarter of which are employed by UPM. There is always activity on the site, and some of the plants operate around the clock. Unplanned shutdowns would be expensive, as the value of production is more than EUR 1 billion.





# COOPERATION KEEPS THE WOOD FLOWS MOVING

**HANDLING WOOD FLOWS REQUIRES THE ABILITY TO REACT QUICKLY 24/7/365.**

Adolf Lahti has been responsible for the wood handling related to UPM's pulp production in Pietarsaari since 2013. The contract includes receiving wood flows, regardless of whether the wood is delivered by train, truck or vessel. In addition Adolf Lahti takes care of warehousing the material and delivering it to the process.

– The even delivery of wood requires a lot from our partner, says Juhani Seppä, UPM's Terminal Manager responsible for the operations in Pietarsaari. The conditions in forests and the volumes of wood vary greatly depending on the seasons.

Up to 200 logging trucks drive to Alholma's wood yard every day. Adolf Lahti's tasks include directing some of their loads directly to the warehouses in the yard used to guarantee that there will be enough wood material. It's essential that the material flow directed into the process remains unbroken. The directing of logging trucks must also be smooth – otherwise the yard will become congested. The operations of logistics chains are subject to both long-term and weekly planning, and there are also separate plans for various disruptions and anomalies. Having lots of experience helps respond to surprises. However, everything is based on good cooperation.

– The close cooperation between us and the client is the reason why we have been so successful with this contract, says Niko Miettinen, Adolf Lahti's Regional Director responsible for the operations in Pietarsaari. We talk to each other every day and go over things before problems develop.

Contractors also need to be flexible in order to react quickly. Material flows wait for no one, and you must be ready around the clock. It must be possible to make decisions immediately.

– If Plans A, B and C fail, it must be possible to put Plan D in motion in ten minutes, says Miettinen.



Juhani Seppä

The client is satisfied with Adolf Lahti's work.

– I can crystallize their work into one word: reliable, says UPM's Terminal Manager Seppä. There has not yet been a situation that Adolf Lahti has not been able to respond to.

Most of the thanks go to the highly competent staff, whose safety is the top priority at Alholma.

– The drivers and maintenance staff who work here are first class, says Miettinen. It's nice to work with competent and responsible people who work efficiently.

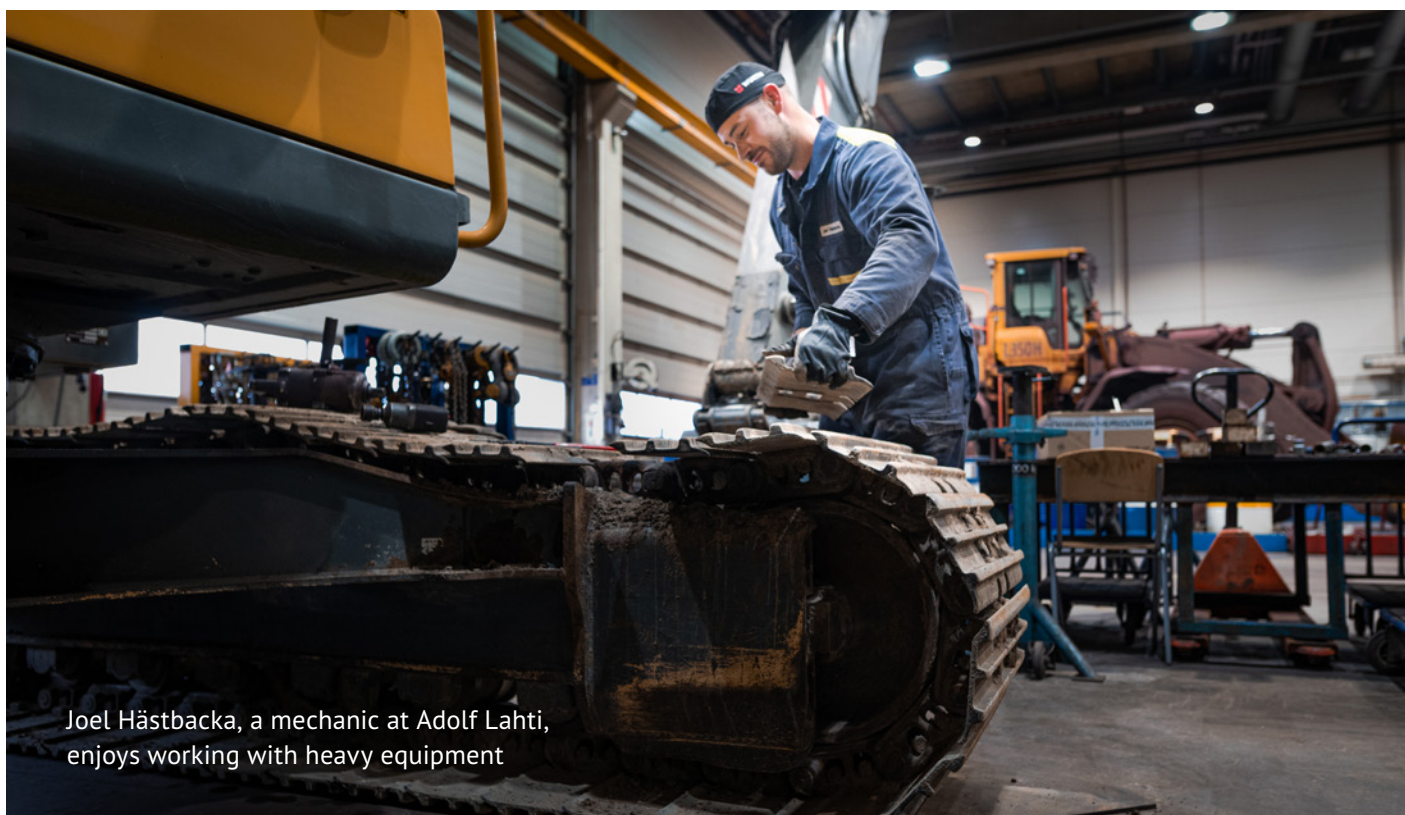
## World-record numbers

UPM is a bioforest industry pioneer that takes the environment into account in all of its operations. Alholma acts as a field testing laboratory for Volvo's future motors. The motors of the reach stackers used at the wood yard have cutting-edge, environmentally friendly technology. In addition, the private railway portion connected to the main railway has been electrified using funding from UPM, and now raw wood is transported to the yard using an electric locomotive. One of the most significant environmental investments was the Liebherr 954 ER material handler that is powered by the electricity generated by the pulp process. Before, the same work was done by a machine using a diesel engine that consumed about 350,000 litres of fuel a year. The Liebherr machine has truly been put to work – it handles more than 3 million cubic meters of wood a year. The maintenance of the machine has been well timed, and there have been no unplanned interruptions in its use.

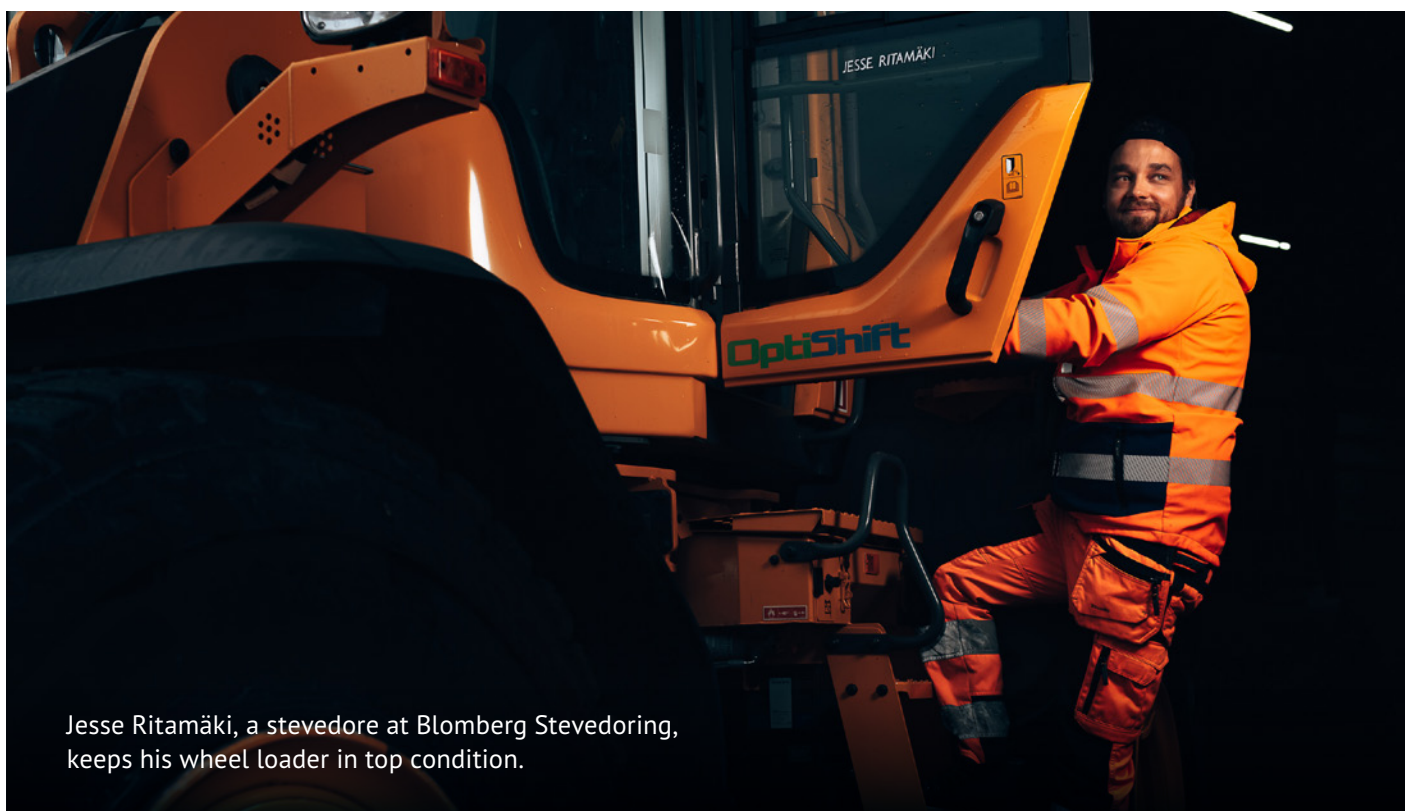
– Our handler has been used for a record-breaking 68,000 hours, Miettinen says. It's a real perpetual motion machine.

# HEAVY EQUIPMENT PROFESSIONALS

THE PROFESSIONALS OF KWH LOGISTICS KNOW HOW TO HANDLE HUNDREDS OF TONNES OF IRON.



Joel Hästbacka, a mechanic at Adolf Lahti, enjoys working with heavy equipment



Jesse Ritamäki, a stevedore at Blomberg Stevedoring, keeps his wheel loader in top condition.



## Working as a mechanic requires problem-solving skills

Joel Hästbacka works as a mechanic at Adolf Lahti's Kokkola location. The 32-year-old man has worked with heavy machinery for his entire career. For the past six years he has worked for Adolf Lahti.

– I trained as a car mechanic, says Hästbacka. However, I have always been more interested in bigger machines.

In Kokkola, Hästbacka makes sure that the location's dumper trucks, cranes, excavators and wheel loaders are in good condition. Sometimes Hästbacka's work takes him to Tornio, where he gets to work on even bigger machines.

– It's nice to do maintenance on the 400-tonne container cranes in Tornio, Hästbacka says.

In addition to carrying out annual maintenance, Hästbacka's work also involves various repair tasks targeting things such as broken hydraulics or electrical faults. Adolf Lahti's equipment is new, and troubleshooting is usually done with the help of a computer.

– The software we use provides a fault code, on the basis of which we carry out the needed actions, Hästbacka says.

If needed, help is available from the suppliers of the machinery, such as Volvo and Mantsinen. However, the most important thing is the mechanic's own

ability to solve problems. Hästbacka also names precision and methodicalness as characteristics of a good mechanic.

– Those are needed to carry out the work safely and efficiently.

Most of the routine work is done independently, but cooperation is also needed – especially in larger pieces of work. Hästbacka praises the team spirit in Kokkola.

– It's nice to solve challenges together with a good group of people.

Adolf Lahti's fleet of machines includes more than 300 units, of which about one in ten are located in Kokkola. The Kokkola location also has a well-equipped big repair shop that is a good place to work. The location has seven mechanics, who will load up their maintenance cars and travel to the company's other locations to work if needed.

Hästbacka has been enjoying his work. Every day is different. Hästbacka enjoys challenges and prefers to do demanding work. His goal is to develop into an even better mechanic – the evolving technology of machines always offers new things to learn. In his free time, Hästbacka does not spend much time working on motors.

– To balance out the work, I go to the gym and exercise outdoors, Hästbacka says. Also my six-year-old daughter and my partner keep me busy.

## For a driver, the condition of the machine is a matter of pride

Jesse Ritamäki, a stevedore at Blomberg Stevedoring, has been operating huge machines since his time in the army. Ritamäki, who followed his brother's footsteps to Blomberg, has worked for the company in Vaasa for 14 years.

– First, I operated a forklift and cleaned the warehouses, Ritamäki says. Eight years ago, I found my place in the cab of a wheel loader.

Ritamäki, who trained as a CNC machinist, was not, in the end, interested in work that matched his training. Working as an operator suited him better. He spends his days at work loading feed trucks in particular.

– I like working independently, Ritamäki says. In addition, we have a good group of people here in Vaasa, and I've also got to know our customers' drivers over the years.

According to Ritamäki, you learn to operate machines by doing it and your competence will increase as the years go by. However, good operators need to have certain characteristics.

– You need to know the limits of a massive machine and pay close attention so that working is safe.

As you build up experience, you understand things more and more by yourself, but in the beginning you must listen and follow advice – Ritamäki says his

older colleagues have been valuable teachers in this. Now Ritamäki himself has some good tips he could pass on to new operators.

Each regular loader at Blomberg Stevedoring has a dedicated machine that they are responsible for. Ritamäki washes his wheel loader and takes care of the oil changes, among other things. The nearly 20,000 kg machine was new when Ritamäki started using it, and he takes care of it with pride.

– I spend so much time with the machine that I want it to look good and be properly maintained, Ritamäki says.

The cab of the machine has good ergonomics. The benches can be adjusted to a great degree and, instead of a steering wheel, the machine is operated using a joystick, which spares the shoulders. A comfortable headrest supports the head. The cab is warm even in the middle of winter and the loader's speakers play a Spotify work playlist. In addition to the good working conditions, Ritamäki is happy with the fact that Blomberg Stevedoring is a financially stable employer. Knowing that there will also be work in the future makes him feel safe.

In his free time, Ritamäki uses the benefits offered by his employer to, for example, go to the gym. He also used to have a motocross bike and a snowmobile, but now a wheel loader is enough. To balance out the daily driving, he likes to go fishing and hike in nature.





THE ENTIRE PROCESS IN  
TAHKOLUOTO IS POWERED  
BY ELECTRICITY GENERATED  
FROM RENEWABLE SOURCES,  
THE CONSUMPTION OF WHICH  
IS OPTIMIZED FROM THE  
CONTROL ROOM CONTROLLING  
THE ENTIRE FACILITY.



### For a common goal

The Finnish state and the City of Pori have also invested in the port and its transport links. The electrification of the Mäntyluoto and Tahkoluoto railways was completed in late 2020. In addition, the capacity of the railway has been increased near the port in particular.

– The various stakeholders in the Pori region and Tahkoluoto work together well, says Rauanheimo's Managing Director Tero Kosonen.



# RAUANHEIMO HAS INVESTED IN TAHKOLUOTO

**THE TAHKOLUOTO TERMINAL CAN HANDLE MORE THAN 160 RAIL WAGONS A DAY. ANNUALLY, THIS AMOUNTS TO MORE THAN 3 MILLION TONNES OF COAL. THE AMOUNTS ARE SET TO INCREASE IN THE FUTURE.**

The Tahkoluoto terminal can handle more than 160 rail wagons a day. Annually, this amounts to more than 3 million tonnes of coal. The amounts are set to increase in the future.

For a long time, the deep-water port in Tahkoluoto received North American and Australian coal vessels. The coal transported by these vessels was used as fuel for the two power plants in the area. Now one of the power plants has been demolished and the other is not used much. However, the area is well-prepared to handle coal. Thanks to Rauanheimo's terminal operations, the traffic has turned to the other direction, and coal from Russia is now transported to Europe, the Americas and Asia via Tahkoluoto. The investment in the terminal was made at the right time, as the global market price of coal has started to rise sharply.

Rauanheimo started operating in Tahkoluoto in 2018, after which the area has been developing rapidly. In summer 2021, a new terminal suitable for handling large bulk flows was opened. The basis for the terminal project was the coal terminal machinery bought from an auction. After a coal terminal in Estonia was closed down, its German ThyssenKrupp conveyors and yard machinery, which were in good condition, came up for sale. Rauanheimo quickly decided to buy them. Next, the machinery needed to be transported and placed in Tahkoluoto.

– The terminal is like a small production plant, says Tero Kosonen, Rauanheimo's Managing Director. In addition to good machines and plans, the project needed staff to be competent and committed and have a great attitude in order to be a success.

Patience was also needed because moving a huge terminal ensemble to a new location is not simple. The project department also gets special thanks from Sami Veneranta, Operative Manager of Adolf Lahti, who is responsible for the operations in the port.

– For example, making the 17-metre-deep hole required by the machine watertight in the middle of winter was quite an effort, Veneranta says.

Thanks to good planning, some of the operations that originally felt challenging ended up going smoothly. For example, the biggest parts of the terminal – shiploader, stacker and reclaimer – could be transported from Estonia to Tahkoluoto whole.

## Efficient and environmentally friendly

The service provided by Rauanheimo includes transporting the coal from the Russian border onto a vessel in

the port in Tahkoluoto and all the handling in between. The high quality of the product is ensured with sampling and metal removal processes. The large storage capacity guarantees short delivery times. Thanks to the new terminal, the handling of coal in Tahkoluoto is significantly quicker, more efficient and more controlled than before. At the semi-automatic unloading station, the coal in the train cars is dumped onto the conveyor, which conveys the coal to the storage yard and from there onto a vessel with the help of loaders. Loading can also be done sideways, which makes it possible to load the vessel evenly. The process also involves metal removal using magnets and weighing. The process will be made more efficient with new heating halls, the only ones in Finland, which speed up the handling of coal when the temperature is below zero. The conveyors and the semi-automatic machines have not only increased efficiency but also raised the safety and environmental friendliness of coal handling to a new level. The nature of the work has changed, and fewer employees are needed for laborious tasks. Sample collection is also now done automatically. The terminal's conveyors are mostly covered, which makes it possible to handle cargo flows without dust build up. In addition, the yard is equipped with 22 water cannons. The entire process is powered by electricity generated from renewable sources, the consumption of which is optimized from the control room controlling the entire facility.

The Finnish state and the City of Pori have also invested in the port and its transport links. The electrification of the Mäntyluoto and Tahkoluoto railways was completed in late 2020. In addition, the capacity of the railway has been increased near the port in particular.







KWH Logistics' staff and internal communications services are provided by a competent team that is led by Mona Andersson-Kuorikoski (second from right), the HR Director of KWH Logistics.



KWH Logistics has made a clear strategic choice to invest in staff even more heavily and systematically. In the picture you can find Rauanheimo's Sales Manager Anton Holm, Rauanheimo's Ship Agency Manager Joel Salmela and HR Director Mona Andersson-Kuorikoski.



# COMPETENCE AS A SUCCESS FACTOR

**THE MOST IMPORTANT RESOURCE OF THE RAPIDLY GROWING KWH LOGISTICS IS COMPETENT STAFF, WHOSE WELL-BEING AND ENJOYMENT OF WORK ARE ALSO CONVEYED TO CUSTOMERS.**

KWH Logistics most significant success factor is its staff, whose well-being and competence are the focus of a great deal of attention. Following the growth of the business, the number of staff increased significantly, which is why work towards building an HR solution that would support all subsidiaries began already in 2019. According to the HR Director Mona Andersson-Kuorikoski, with a clear HR solution KWH Logistics will be able to provide their subsidiaries similar and equal high-quality services that will help them succeed.

– Right in the beginning, we made a clear strategic choice to invest in staff even more heavily and systematically, says Andersson-Kuorikoski. This was a very important decision that has resulted in a lot of positive feedback in a short period of time.

## Staff can have their say

Staff was included in the development of the operations from the start.

– I find it very important that we in senior management have a comprehensive enough understanding of the staff's expectations and wishes, Andersson-Kuorikoski says. Already for that reason, it's important for us to involve staff in the development of our operations. At the same time, we will be able to meet the needs expressed by staff as well as possible.

Staff has been able to have their say about matters such as the updating of the division's values by sharing what kind of things are important to them in everyday life. The chosen values ended up being knowledge, transparency, safety and integrity.

The promotion of competence is one of the cornerstones of KWH Logistics' operations. Enjoyment of work is also important for well-being.

– We offer different training packages and invest in coaching, Andersson-Kuorikoski says. In addition, we have also organized collaboration groups where experts can work together.

Remote connections, which have become more common during the COVID-19 pandemic, have made it easier for employees working at different companies to contact each other and made employees less hesitant to take part in shared coaching. In addition, the exceptional circumstances have created an opportunity to try new approaches and different ways of working. These measures have also made it possible to protect staff and directly influence the productiveness of work by paying attention to well-being.



**ACCORDING TO HR  
DIRECTOR MONA  
ANDERSSON-KUORIKOSKI,  
COMMUNICATION IS  
OFTEN THE THING STAFF  
WANTS MORE OF - IT'S  
PART OF A CULTURE OF  
TRANSPARENCY.**

## Everything is based on open communication and having a good team

It's important that HR operations have vision, goals and genuine effect. In addition, it must be possible to measure and monitor the operations. Andersson-Kuorikoski also emphasises the importance of open communication, which has been further increased by the exceptional circumstances.

– Internal communications being part of day-to-day work is very important. It brings transparency and a feeling of security and allows us to draw attention to genuinely important issues.

KWH Logistics' staff and internal communications services are provided by a competent team with a strong business perspective.

– We have a very good group that actively helps the progress of things. Our core idea is continuous development.

At KWH Logistics, the well-being and coping of staff is thought of and developed in a solution-oriented way. For the division, this offers a competitive advantage – it's a strategic choice to place importance on staff.



**Juho Makkonen**

has been appointed as Commercial Director at **Moonway** as of 1.11.2021. He is responsible for the entire company's operations and developments. He has worked in the company since 2011 and most recently held the position of Sales Manager. He reports to the Managing Director Markku Mäkipere.



**Mika Lepänjuuri**

has been appointed as **Adolf Lahtis** Regional Director as of 15.06.2021. His area of responsibility is Middle and Eastern Finland. He comes from Adolf Lahti's sister company Oy M. Rauanheimo Ab where he most recently held the position of Transit Traffic Director. Previously he has worked at UPM Oy, Metsä Group and Aranna Oy in various positions within the logistics and supply chain.



**Jarkko Vaarakallio**

has been appointed alongside Stefan Brännkärr as HSEQ Manager of **Adolf Lahti** and **Rauanheimo** as of 1.10.2021. Jarkko is responsible for Southern Finland and Stefan is responsible for the Northern and Western Finland. Jarkko reports to Pekka Pöllänen and Stefan reports to Tero Kosonen.



**Larri Andersson**

has been appointed as Foreman at **Stevena's** new factory logistics operations as of 17.06.2021. He is in charge of the operative management at the car factory in Uusikaupunki which operates under the name **Material-Master**. Previously he has worked among others at Alfons Håkans and Finnsteve.

Photos: KWH Logistics

**KWH LOGISTICS BUSINESS GROUP STRUCTURE HAS BEEN RENEWED**

The structure of the KWH Logistics Business Group was renewed in June 2021. KWH Freeze was separated from KWH Logistics to become a Business Group of their own inside the KWH Group. Otherwise the structure and operations of KWH Logistics will remain the same. Following the change, the KWH Group now has four independent business groups – Mirka, KWH Logistics, KWH Freeze and KWH Invest.

**KWH Logistics Key Figures** (2020)



Turnover MEUR

**165**



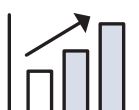
Personnel

**507**



Ship Calls

**2157**



Average annual growth

**7%**



Investments MEUR

**38** (IFRS16)



Cargo volume (million tonnes)

**12,8**



# **KWH LOGISTICS**

**MOVING AND HANDLING GOODS AS WELL AS WAREHOUSING IS AT THE CORE OF OUR BUSINESS. IN ADDITION TO OPERATING IN PORTS, TERMINALS, AND FACTORY AREAS WE HANDLE TRANSPORTS ALL AROUND THE WORLD.**

Photos: KWH Logistics

## Port Logistics



We offer stevedoring, forwarding and ship agency services as well as warehousing in 17 Finnish ports. We customize overall and efficient logistics solutions for our customers.

 **RAUANHEIMO**

 **STEVENA**

 **BLOMBERG**  
Stevedoring

 **JALANDER**

 **RODÉN SHIPPING**

## Industrial Services



We offer overall and customer-focused logistics machinery services as well as equipment rental. We perform smaller as well as large scale tasks with precision and according to the demands of the customer.

 **ADOLF LAHTI**

 **BLOMBERG RENT**

## International Transports



We offer global logistics solutions by all modes of transportation (road, sea, air, container, bulk and project transports). In addition, we handle customs clearance, forwarding and warehousing services.

 **BACKMAN-TRUMMER**

 **MOONWAY**



# **KWH LOGISTICS**

**CLEVER OVERALL  
LOGISTICS SOLUTIONS**

[www.kwhlogistics.com](http://www.kwhlogistics.com)