



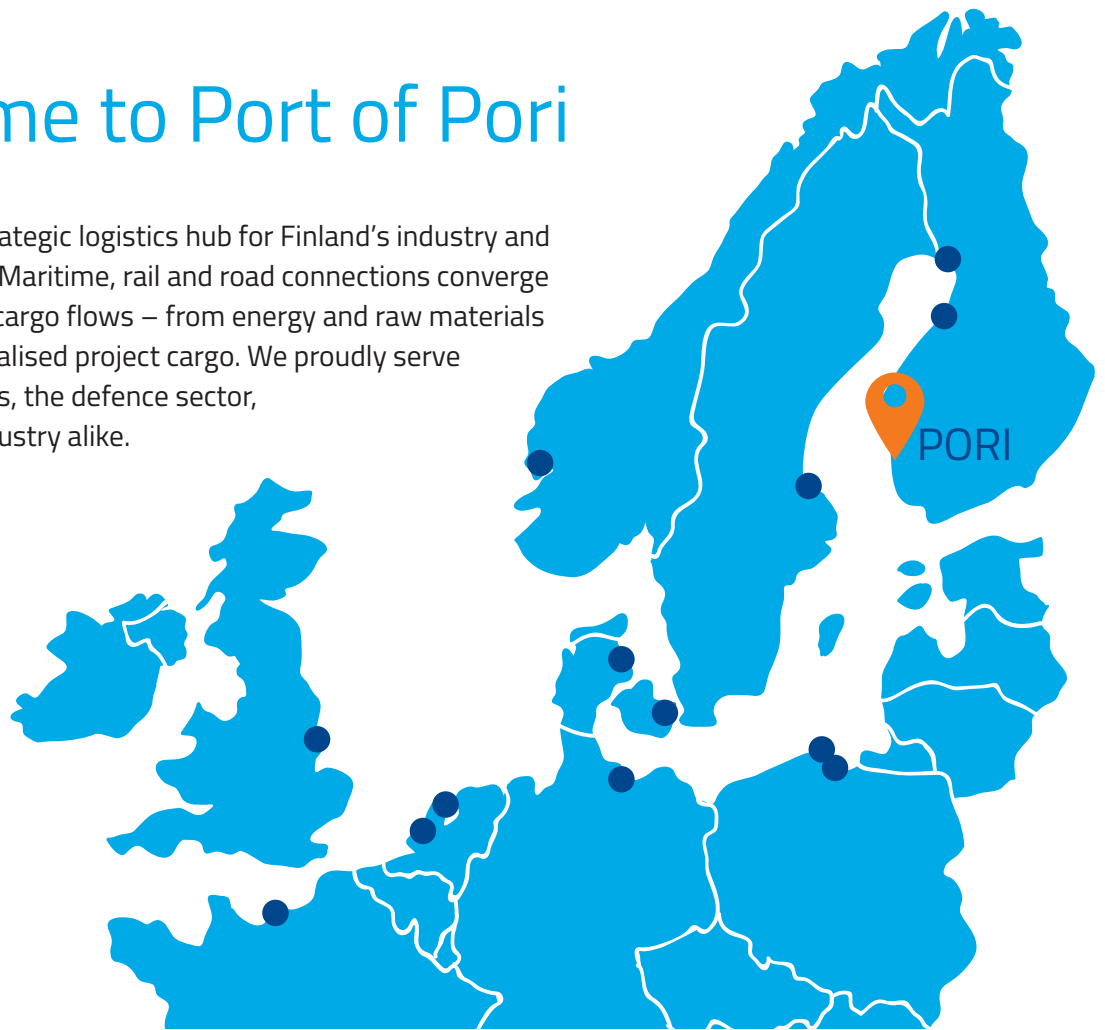
Most Energetic Port in the Nordics

DORT
PORT OF PORI
PURI



Welcome to Port of Pori

Port of Pori is a strategic logistics hub for Finland's industry and security of supply. Maritime, rail and road connections converge here into efficient cargo flows – from energy and raw materials to heavy and specialised project cargo. We proudly serve industrial operators, the defence sector, and the energy industry alike.



Our operations are built around three main terminals:

- Mäntyluoto Harbour
- Tahkoluoto liquid bulk and Chemical Harbour
- Tahkoluoto Deep Harbour

Tahkoluoto

Pilot boat

4 NM

Mäntyluoto

Pilot boat

7 NM

PORI



WEST TANK

LÄNSI-SUOMEN POLTTOÖLJY

- | Bulk tank storage
- | Chemical handling
- | Port operator services

Tel. +358 45 657 9029



Across these terminals, we specialise in the handling of dry and liquid bulk, general cargo and project shipments. At the core of our operations are industrial raw materials and finished goods, circular economy flows, and renewable energy logistics. Four experienced operators – Olmar Pori Oy, Oy M. Rauanheimo Ab, Aava Shipping Oy, and Ahtauskone Oy – ensure reliable and efficient cargo handling and port services.

Towards Smarter, Cleaner Logistics

At Port of Pori, we are committed to continuous development and responsible operations. Our investments in renewable energy and circular economy initiatives reflect our dedication to sustainable growth.

Our vision is to be the leading port in Western Finland and a key national hub for maritime logistics and security of supply. This ambition guides how we develop our services, infrastructure, and partnerships.

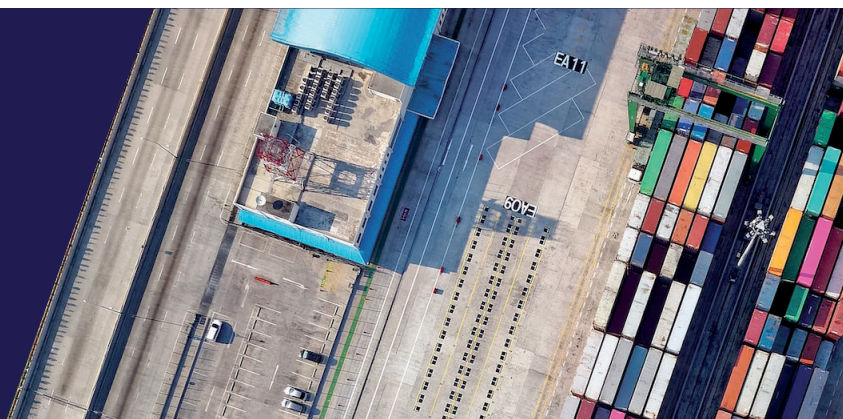
We invite you to explore our operations and join us in building a sustainable, secure, and forward-looking future.

Vesa Mäkilä
CEO
Port of Pori Ltd



**Efficient &
Futureproof Ports**

www.huhtaware.fi





➤ Port of Pori Vessel and Port Services

Efficiency and Reliability Around the Clock

Port of Pori provides a comprehensive range of high-quality port and vessel traffic services to ensure smooth and safe port calls for all ships, including access control and security services in accordance with the ISPS Code.

➤ Mooring and Unmooring

Must be ordered at least two hours before the required time via Port Control.

➤ Waste Disposal

Waste disposal points are available at both Mäntyluoto and Tahkoluoto harbours.

➤ Icebreaking

Order icebreaking services from Port Control at least two hours before port arrival.

➤ Water Supply

Fresh water is available 24/7. Orders must be placed 24 hours in advance through Port Control.

➤ Power Supply

Temporary electricity connections (max 32/63A) for repairs and maintenance are available upon agreement.

➤ Pilot Services

Finnpilot's pilotage is available 24/7. Inbound pilotage requests must be submitted three hours before arrival at the pilot boarding point, outbound two hours before departure. More info: finnpilot.fi



All core services are coordinated
by Port Control, which operates 24/7/365.

Port Control (24/7): +358 44 701 2623

Email: valvojat.satama@portofpori.fi

AVA SHIPPING

Your port,
our logistics:
Comprehensive and
efficient service.

STEVEDURING

STORAGES

AGENCIES

OFFICE
Karjarannantie 33
FI-28100 Pori
Mon-Fri 09.00-17.00

aavashipping.fi

TERMINAL
Merisatamantie 14
FI-28880 Pori
Mon-Fri 09.00-15.30



Area Rental and Conveyor Services at Port of Pori



AHTAUSKONE OY
INDEPENDENT, FULL SERVICE PORT OPERATOR IN THE PORT OF PORI

AHTAUSKONE OY
ahtauskone.fi

MIKKO SJÖROS
mikko.sjoros@ahtauskone.fi
+358 50 5187827

TIMO HARJULA
timo.harjula@ahtauskone.fi
+358 400 242454



Port of Pori offers flexible area rental solutions to accommodate various operational needs, including both short-term and long-term leases. These areas are suitable for storage, handling, and other logistics-related activities, providing businesses with the necessary space to support their operations efficiently.

In addition to area rentals, the port provides conveyor services, particularly in the Tahkoluoto harbour area. These services facilitate the efficient movement of bulk materials, enhancing the overall cargo handling capabilities of the port.



General Inquiries
info@portofpori.fi
 +358 44 701 2609

Conveyor Services Orders
operations@portofpori.fi

➤ **For more detailed information on area rentals and conveyor services, visit our website: portofpori.fi.**

A reliable partner for operators in the port and logistics sectors

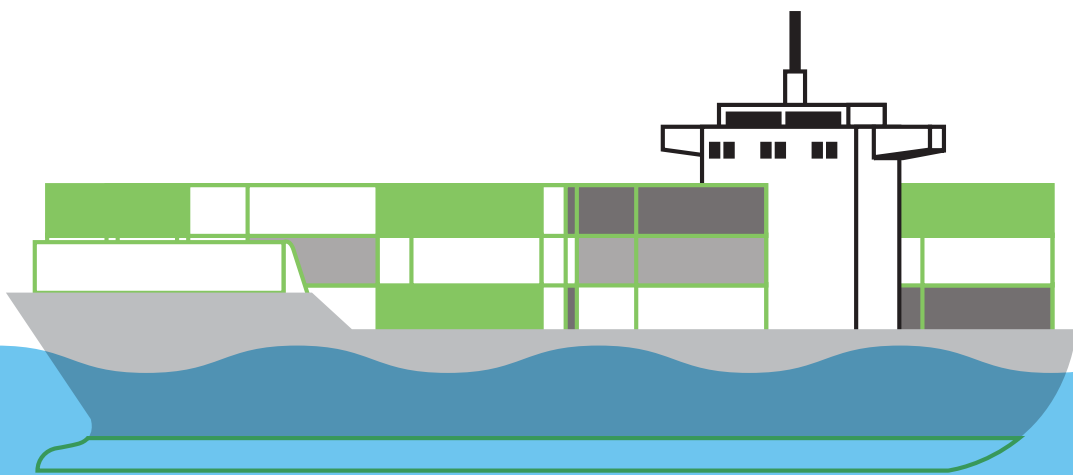
We offer multidisciplinary planning, construction, supervision, and other expert services for construction and built environment projects.

Our experts are located throughout Finland, and by collaborating with us, you also gain access to Ramboll's extensive network of international specialists.

fi.ramboll.com



© Kuvatoimisto Kuvio Oy



15,3 m

DORT
PORT OF PORI
PORI



Port of Pori combines deep-water access, spacious facilities and expert project handling to offer a reliable and high-capacity logistics hub for the most demanding cargo needs.

➤ **Depth, Space and Expertise for Demanding Cargo**

Port of Pori provides ideal conditions for demanding logistics and special transport projects. Our deep-water fairway, extensive storage areas, and specialised handling equipment make us a prime location for heavy and oversized cargo.

➤ **Finland's Deepest Fairway**

The 15.3-metre-deep fairway at the Tahkoluoto harbour is as deep as deepest in Finland, allowing even the largest vessels to call at the port. This makes Pori a unique gateway in the Baltic Sea, particularly for large-scale and heavy freight operations.

 **MÄKIVAARA**

**Professional in the earthworks
and transportation industry.**

Safely | Responsibly | Cost-effectively

kuljetusmakivaara.fi





➤ **Extensive Storage and Yard Capacity**

The port area offers ample space for handling and storing large and unusually sized cargo units. The port operators are equipped with modern and versatile machinery, ensuring safe and efficient cargo operations.

➤ **Specialised Project Cargo Expertise**

Port of Pori's operators provide a comprehensive range of services, including vessel loading and unloading, heavy machinery operations, and ship clearance. The

port is equipped with cranes capable of lifting up to 200 tonnes, enabling the handling of extremely heavy and specialised loads.

➤ **Strategic Role and Security of Supply**

The Port of Pori is one of Finland's most critical ports in terms of national security of supply. It plays a key role in serving industry, the defence sector and energy logistics. A significant share of Finland's fuel and LNG imports pass through the port.

Your trusted partner for efficient ship agency services and optimized handling of large bulk volumes.

www.kwhlogistics.com

in

f

ig

 **KWH LOGISTICS**





New RoRo Ramp – Ready for Heavy Moves

Completed in 2024, the new RoRo ramp at Kalloniahti in Mäntyluoto Harbour introduces a new mode of cargo handling at Port of Pori, serving the needs of industry, project logistics, and defence transport. With a draft of 10 metres, the ramp can accommodate larger vessels safely and efficiently. The ramp itself measures 40.5 metres in length, providing ample space for the loading and unloading of heavy and oversized cargo.

Adjacent to the ramp, a 1.7-hectare handling and storage yard will be completed in spring 2025. This additional space enhances the operational capacity of the port and supports smooth cargo transfers.

The ramp has been specifically designed to meet the requirements of military mobility, and the project forms part of an international transport infrastructure programme aimed at strengthening the EU's and Finland's resilience and defence readiness.



- **The new RoRo facility strengthens Port of Pori's position as a key hub for heavy and specialised transport – by land and by sea.**



Roll-on/roll-off

Location: Mäntyluoto Harbour, Kalloniahti

Ramp length: 40.5 m

Ramp draft: 10 m

Yard area: 1.7 ha



**Insinööritoimisto
Matti Pitkälä Oy**
Midgårdinkuja 1b +358 10 8322 200
FI - 01510 VANTAA www.pitkala.fi



SWECO 



Location: Tahkoluoto Harbour, berths 29 and 30
Shore power in use: Will be used for liquid bulk vessels
Solar power and battery storage: Will be built behind berth 29
Project budget: Will be approx. €3.4 million
EU funding: Will be up to €1 million
Implementation period: 2024–2026

Power2Quays – Shore Power and Renewable Energy at Tahkoluoto

Port of Pori has taken a major step towards low-emission maritime logistics through the Power2Quays project. Shore power is now available at liquid bulk berths 29 and 30 in Tahkoluoto, enabling moored vessels to receive electricity directly from the port.

A solar power plant has been built in the yard area behind berth 29, integrated with a battery storage system. This setup allows renewable electricity to be supplied directly to vessels – even when sunlight is not available. The system significantly reduces emissions and noise while improving energy efficiency throughout port operations.

Key Benefits:

- Lower emissions and noise in the port area
- Increased use of renewable energy and improved energy self-sufficiency
- Enhanced environmental performance in the logistics chain



More information:
portofpori.fi



DYME

Optimise the efficiency and sustainability of your port operations with our cloud platform designed specifically for port operations

Whether you're running a port, managing cargo logistics, vessel traffic, or terminal operations, our data driven and AI powered cloud technology keeps you ahead of the tide

Contact us | <https://dymesolutions.com> | contact@dyme.fi | +358 400 270 485

Future-proofing port operations with modern cloud solutions

- **Scalable:** Adapt to dynamic demands with a cloud infrastructure that grows with you
- **Resilience:** Ensure uninterrupted operations with robust, high-availability systems
- **Secure:** Safeguard critical data and operations with enterprise-grade security measures
- **Cost-effective:** Reduce IT overhead with a pay-as-you-go model that fits your budget

A New Center for Baltic Sea Wind Power

The Pori Offshore Wind Hub is a development project in order to build a world-class operating environment for offshore wind developers and service providers. Focusing on pre-assembly, installation support, and maintenance operations, the hub leverages the strengths of Mäntyluoto Harbour and the region's strong energy sector expertise.

More than ten large-scale offshore wind projects have been announced in the Bothnian Sea – on both the Finnish and Swedish sides. Pori is positioned to serve as a logistics and operations base throughout the life-cycle of these projects.

With open access without archipelagos, direct connection to Finland's national power grid, and efficient road and rail links, Pori offers unmatched infrastructure for offshore wind logistics and power transmission. The area is also home to the world's first offshore wind farm in icy sea conditions, proving its capability to support demanding energy solutions.

Companies in the steering group of this project: City of Pori, Port of Pori Ltd, Tahkoluoto Offshore, Suomen Hyötytuuli, Olmar Pori Oy, Tuulia Energy, Vuorsola Oy and Davie / Sata Shipbuilding. This collaboration ensures continued growth and positions Pori as a key enabler in the fast-developing offshore wind ecosystem of the Baltic Sea.





Location: Port of Pori, Mäntyluoto Harbour, on the Bothnian Sea coast
Core services: Pre-assembly, logistics, maintenance, storage
Grid access: Direct connection to the national power grid
Proven experience: World's first offshore wind farm in icy sea conditions
Partners: City of Pori, Port of Pori Ltd, Tahkoluoto Offshore, Suomen Hyötytuuli, Olmar Pori Oy, Tuulia Energy, Vuorsola Oy and Davie / Sata Shipbuilding.

More information:

> merituulikeskus.fi

Kemira

Kemira Chemicals Oy

Tahkoluoto Port
+358 10 8611
kemira.com





Porin Satama Oy

Merisatamantie 4

FI-28880 Pori

Finland

ISPS / Port ID: Mäntyluoto: FIPOR-0001

Tahkoluoto:

Deep-water port FIPOR-0002

Liquid bulk and chemicals harbour FIPOR-0003

UN Locator code: FIPOR

info@portofpori.fi

Contact



Port operations, warehousing and shipping services at the Port of Pori

Olmar delivers logistics services, with a particular focus on strategic maritime assets.

We are a warehousing, stevedoring, cargo handling, and crane services operator at two harbours at the Port of Pori: Mäntyluoto and Tahkoluoto.

olmar.fi

