



PIIKKIO WORKS



CUSTOMIZED SOLUTIONS FOR
MARINE ACCOMMODATION



WE ARE PIIKKIO WORKS

Piikkio Works is the world's leading manufacturer of prefabricated modular cabins. Over our nearly 40 years of operation, we have delivered more than 140,000 cabins and bathrooms to all kinds of passenger and specialized vessels, offshore industry, hotels and residential houses.

Industrial cabin manufacturing activities started in 1982 when the first cabin factory was established in Piikkiö, Southwest Finland. Today, the production capacity of our factories is more than 6,000 cabin and bathroom units annually.

Our state-of-the-art panel production facilities and assembly lines, together with our international supplier network, ensure our position as a leading supplier of prefabricated cabins and turnkey delivered facilities for all accommodation needs.

Piikkio Works is a subsidiary of Meyer Turku Oy.



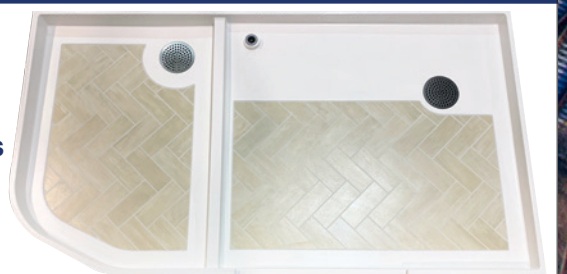


esmarin
OY ESMARIN COMPOSITES LTD

ADVANCED COMPOSITE SOLUTIONS

Oy Esmarin Composites Ltd and its expertise have been operational within the marine sector for more than 20 years

Continuous improvements within the company and our modern production line have resulted in our company being one of the leading professionals in our field of activity, where we are specialized in bathroom floor elements for cruise ship cabins. High quality, dimensional accuracy, light-weight and fire safety are important product features related to our activities and products. Our constantly evolving quality management system is ISO 9001:2015 certified and meets the requirements of the IMO and MED standards.



WWW.ESMARIN.FI

PIIKKIO WORKS OY

- ✓ founded in 1982
- ✓ located in Piikkiö, in the city of Kaarina, approximately 30 km from Meyer Turku Shipyard
- ✓ nearly 40 years of experience in manufacturing comfortable, modern passenger cabins and modular accommodation units in all shapes and sizes.

AT HOME ON THE SEVEN SEAS.

Honeywell PEHA is also at home on cruise liners. Our products provide lighting in all corridors and provide pleasant cabin lighting at all times with dimmers or pre-programmed lighting scenes. Wharves and shipyards trust products from Honeywell PEHA to deliver an excellent customer experience.

More information: www.peha.de

Honeywell
PEHA

© 2020 Honeywell International. All rights reserved.

WHY CHOOSE **PIIKKIO WORKS?**

Quality

Certified products and operations
Manufactured in advanced factory conditions
High-quality structures with a high level of sound insulation

Safety

Standard-setting in safety, quality and comfort
Fireproof B-0/B-15 structures
All safety systems installed and tested at the factory

Innovations

Forerunner in research and development
Efficient cabin concepts maximizing the available space
Continuous development of wall and ceiling panel technology

Expertise

A trusted partner with nearly 40 years of experience
Complete solutions, worldwide deliveries
Service throughout the whole lifecycle of the cabin

Concept

Completely fitted and tested "plug and play" modules
Comprehensive service from mock-up to commissioning
Savings in building time and total costs

RAIHA
HYDRAULICS

www.raiha.com

Founded in 1973, Raiha Hydraulics is one of the oldest companies in the hydraulics sector in Finland. We have grown from a maintenance workshop of axial piston pumps and engines to a full-service hydraulics business. Raiha Hydraulics is a part of Rauma-based Hollming Group.

Our skillful personnel makes us a reliable for our clients and easy to work with. We understand the character of our clients' business and are, therefore, able to bring added value to our clients through high-quality, rapid and flexible service.

Core competencies:

- Hydraulic systems
- Piping systems incl. 3D design (representation of GS-Hydro in Finland)
- Hydraulic pump, engine, cylinder, accumulator and valve maintenance
- Hydraulic components

CABIN MODULES PIONEER

Piikkio Works was founded in 1982. However, the history dates back to the 1960s, when the production of toilet and bathroom modules began at the Turku shipyard. The benefits of modulation were quickly observed.

The first complete modular cabin was installed in 1975 on the NB1219 vessel M/S Don Juan. Inspired by positive experiences, the next ship in the series came with 20 single cabins with floors.

The cabin module took its current shape in 1980: the cabin is floorless, except for the toilet and bathroom space. The product was patented, and its manufacture started in 1981. The first 52 cabins were installed in November 1981 on the NB1256 vessel M/S Norilsk.

The cabin module made a breakthrough in shipbuilding quite quickly. As the business expanded, production was moved to its current location in Piikkiö in 1982.

Meyer became the owner of the factory in 2014. Following the change of ownership, new production facilities were built on the factory site to meet future needs. Production is based on lean thinking, meaning the starting point for operations is efficiency, quality and timeliness.



In the modern cabin factory, about 160 cabins are completed in one shift every week.

The production space covers about 25,000 m².



**Reliable Marine Interior Supplier and
Cooperation Partner in Cabin Furniture
for Piikkio Works since decades**

ri
rauma interior
building business spaces



www.raumainterior.fi

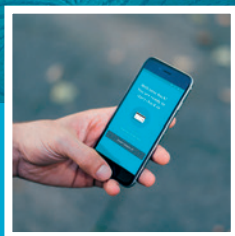
MASTERPIECE OF GENERATIONS

Current cabin modules are still based on innovations from decades ago. The development of the modules is continuous, combining the engineering expertise of several generations. On the whole, it is quite successful: Piikkio Works has delivered more than 140,000 cabin and bathroom modules to vessels sailing all around the world.

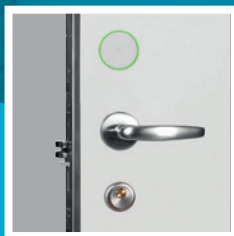
Deliveries within Europe and Asia



A trusted partner for the marine industry.



Mobile Access



VingCard Locks



Elsafe Safes



TrioVing Cylinders

At ASSA ABLOY Global Solutions, innovation is nothing new. We have been leading the industry in security and access technology for over 40 years, since inventing the world's first card lock. As part of the ASSA ABLOY family, Marine provide service and support worldwide from our dedicated offices in Norway, Spain, Singapore and the USA.

We offer advanced security solutions and peace of mind for both hospitality providers and their guests and crew. Our advanced solutions include: VingCard electronic locks, mobile access, gangway control, Elsafe safes, printers and encoders, cylinders and keys and mechanical stainless steel locks.

Learn more today at assaabloyglobalsolutions.com/marine

ASSA ABLOY
Global Solutions

Experience a safer
and more open world



Piikkio Works' cabins are part of great ensembles with tremendous innovations.





CENTRAL PARK

CHIPS GALLERY

PARK CAFE

PICTURE THIS

ART GALLERY

COACH

SLING RIDE

WHEEL BAR

1310 CENTRAL PARK

GIOVANNI'S TABLE

VINTAGES

CENTRAL PARK



MIRTER

Our expertise lies in producing electrical cabinets and architectural lights taking into account the specifications and needs of the marine industry.

MirTer Oy | HUITTINEN, FINLAND

Phone +358 2 560 7300 | mirter@mirter.fi | www.mirter.fi



MEYER TURKU OY

In recent years, Piikkio Works has delivered modular cabins to only one address: the parent company, Meyer Turku Shipyard. Among other things, all Mein Schiff series vessels ordered by TUI Cruises have a total of 11,386 cabins manufactured by the company.

Meyer Turku Shipyard has built several large, innovative cruise ships. Even today, there are several cruisers for more than 5,000 passengers being built to which modular cabins with bathrooms will be delivered. The buyers of these vessels are Carnival Cruise Lines, Costa Crociere and Royal Caribbean Group.



Lighting Solutions



catalogue download

reliable | creative | innovative

www.lightpartner.de

EUROPEAN SHIPYARDS

Shipyards in Northern Europe have built very different types of vessels in the 21st century. Piikkio Works Oy has delivered passenger and crew cabins of different sizes, equipped in different ways to these vessels. At the same time, there have been cabin modules in production for cruise ships, passenger car ferries and car ferries.

Much of the international shipbuilding project in the 21st century has been carried out by shipyards in Germany and Norway. For example, Meyer's shipyard in Papenburg ordered cabins from Piikkio Works for the Royal Caribbean Cruise Lines vessels Serenade of the Seas and Jewel of the Seas. In Finland, in addition to Turku shipyard, our customers have also included Rauma and Helsinki shipyards.



SELECTED REFERENCES - CRUISE LINERS

Name of the ship

Costa Smeralda
Mein Schiff 1 - 6
Oasis of the Seas
Allure of the Seas

Yard

Meyer Turku Oy
Meyer Turku Oy
Aker Yards Oy, Turku
Aker Yards Oy, Turku

Owner

Costa Crociere
TUI Cruises
Royal Caribbean Cruises Ltd, USA
Royal Caribbean Cruises Ltd, USA

Freedom & Radiance class

Freedom of the Seas
Liberty of the Seas
Independence of the Seas
Jewel of the Seas (Radiance class)

Aker Finnyards Inc., Turku
Aker Finnyards Inc., Turku
Aker Finnyards Inc., Turku
Jos. L. Meyer GmbH, Germany

Royal Caribbean Cruises Ltd, USA
Royal Caribbean Cruises Ltd, USA
Royal Caribbean Cruises Ltd, USA
Royal Caribbean Cruises Ltd, USA

Cabins made in Piikkiö
have been installed on the
vessels of the following
main operators:

- ✓ Aida Cruises
- ✓ Carnival Corporation
- ✓ Color Line
- ✓ Royal Caribbean Group
- ✓ Stena Line
- ✓ Superfast
- ✓ Tallink Silja
- ✓ TT-Line
- ✓ TUI Cruises
- ✓ Viking Line



MAKINEN

THE BEST REFURBISHMENT EXPERIENCE

MAKINEN corporation is known as one of the leading interior turnkey project contractors in the global shipbuilding industry. We also have own production unit where we manufacture sofas and other custom-made furniture.

OUR UNIQUE SOLUTION: LEAN CABIN REFURBISHMENT

WE WERE the first in the world to implement lean production methodology in cabin refurbishment projects. Our lean project execution guarantees a steady flow of ready cabins, instant quality control and project planning with an accuracy of within a minute. The lean approach ensures that sustainability is at the highest possible level in cabin refurbishment projects.

BEING THE BEST EMPLOYER

FOR US, sustainability is also about how we conduct our business. This is reflected in our values and culture. We care about all our people and foster a collaborative culture, where people develop their competencies. Engaged and motivated employees enable us to deliver the best results.

LONG-TERM TRUST AND RESPECT

DURING OUR long history, we have established an extensive global supplier network. We build close, long-term relationships with our suppliers. Having trust and mutual respect supports our ability to better serve our customers.

CONTACT: I.S. Mäkinen Oy | Sameli Lähdesmäki | sameli.lahdesmaki@ismakinen.com | Tel. +358 40 730 9750 | ismakinen.com

I.S. Mäkinen Oy, was founded in 1992. We have 70 permanent employees, and our offices are located in Finland, the US and China. During the past 15 years, we have refurbished over 40,000 cabins.





CABIN FURNITURE



QUALITY CRAFTSMANSHIP
SINCE 1980



PORIN PUUKALUSTE

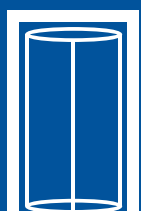
For more information
www.porinpuukaluste.fi



Passenger and crew safety and health at sea are primary concerns for all shipbuilders especially in future design.



Door Closers



Door Automation



Interior Glass Systems

P: +358(0)10-218 81 00
info.fi@dormakaba.com
www.dormakaba.com

dormakaba 

SHIPOWNERS

Shipowners are extending the life cycle of ships through conversion projects with very significant changes.

Piikkio Works has been involved in several modernisation projects. For example, when Royal Caribbean Cruise Lines renovated its Enchantment of the Seas at the Turku shipyard, 196 cabins were delivered to the extension. In addition, 35 cabins were delivered for Cunard Cruise's Queen Mary 2 conversion project, with the German shipyard Blohm & Voss as the contractor.



Data Networks

which cope with high
sea conditions

R&M is a global Swiss developer and manufacturer of high quality, high performance and high reliability solutions for copper twisted pair and fiber optic cabling solutions. R&M products get developed focusing on ease of installation and longevity.



Twisted Pair System

- complete product range for structured ship cabling
- 4PPoE ready and *PowerSafe*
- high vibration resistance
- sealed wire to plug connection with IDC
- compact and space saving solutions available
- FM45 – field mountable RJ45 plug

Fiber Optic POLAN System

- structured cabling solution
- future proof and application-independent
- space and weight saving
- laser protection included
- extended product warranty 5 years
- FO Field – field mountable optical connector



For more information visit
www.rdm.com/Markets/Local-Area-Networks/Ship-Cabling

Headquarters Switzerland

Reichle & De-Massari AG
Binzstrasse 32, 8620 Wetzikon
+41 (0)44 933 81 11, hq@rdm.com

www.rdm.com



OFFSHORE

Piikkio Works also manufactures cabins for accommodation modules on oil rigs. Deliveries are guided by specific regulations and requirements for safety, quality assurance and environmental protection. Fulfilling them requires extreme care and precision.

The company has also built cabins to be used in Norway in the North Sea and the Barents Sea, and in Scotland near Shetland. The oil fields are operated by Norwegian Aker Drilling, Statoil Hydro, BP Norge and ConocoPhillips. The customers in the projects have been Leirvik Module Technology and SLP Engineering in Norway, SMOE PTE in Singapore and Hyundai Heavy Industries in South Korea.



SELECTED REFERENCES - OFFSHORE PLATFORM

Name of the ship

Clair Ridge
Ekofisk
Goliat FPSO
ValHall

Yard

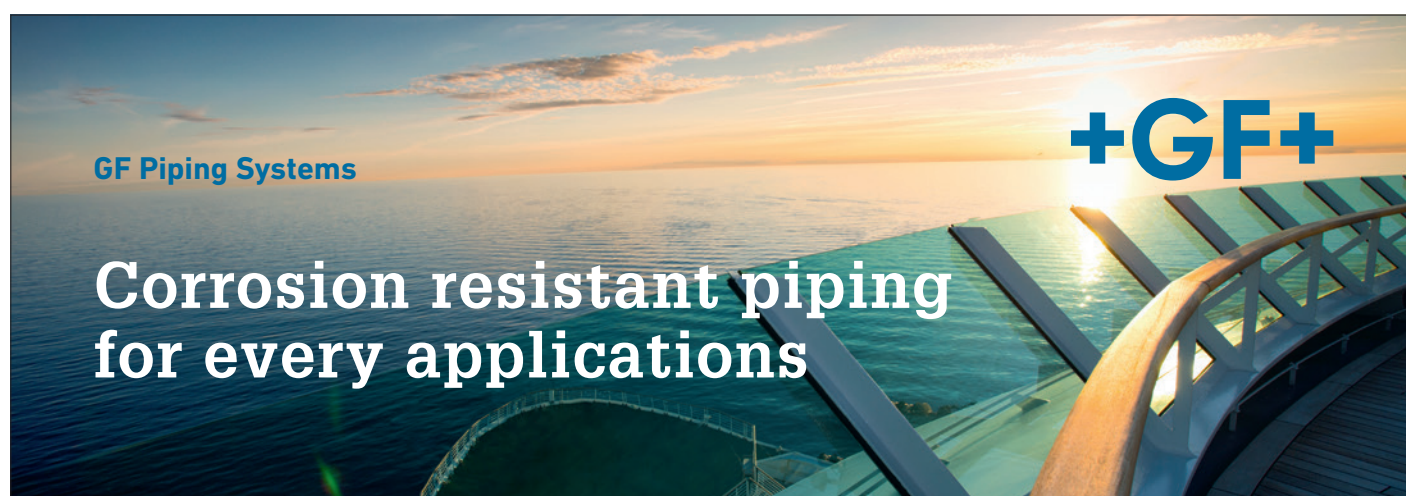
Hyundai Heavy Industries Co., Ltd, Korea
SMOE PTE Ltd, Singapore
Hyundai Heavy Industries Co., Ltd, Korea
SLP Engineering Limited

Owner

BP UK, UK
ConocoPhillips, Norway
ENI Norge
BP Norge AS, Norway

Cabins

99
552
120
180



We have developed systems comprising pipe, fittings, valves, and measuring and control devices in high quality corrosion resistant thermoplastics for the transport of fresh and sea water, but also other media as glycol, salt solution and compressed air. Whether installed from engine room, through kitchen to cabin locker, GF Piping Systems provides a solution.

Highlight products for marine



SeaDrain White & Fast Lock
Grey & black water, vent line



INSTAFLEX
Hot & cold, fresh water



COOL-FIT 2.0
Chilled water, AC cooling



Sanipex MT
Hot & cold, fresh water,
AC-cooling, compressed air



iFit
Hot & cold, fresh water,
AC-cooling

More information and products www.gfps.com

GFDO_AD_00046_EN (12.19)

BUILDING CONSTRUCTION SECTOR

Piikkio Works also supplies bathroom elements for apartment buildings and hotel properties. So far, the most important delivery on land has been the delivery of 302 bathrooms for the Solo Sokos Hotel Tornî in Tampere. The contractor at the site was Finnish SRV Rakennus. The hotel, part of the Sokos Hotels chain, was completed in 2014.

Elements have also been delivered to the Hilton Airport Hotel, located near Helsinki-Vantaa Airport. The project was implemented by the construction company Skanska Talonrakennus. Piikkio Works' bathrooms can also be found in numerous residential construction projects of NCC Rakennus Oy and Skanska Talonrakennus in Vantaa, Lahti, Hollola, Rauma and Järvenpää, among others.



SELECTED REFERENCES - CONSTRUCTION INDUSTRY

Name of the case

Helsinki Children's Hospital
Solo Sokos Hotel Tornî Tampere
Hilton Airport Hotel, Helsinki-Vantaa

Builder

SRV Rakennus Oy
SRV Rakennus Oy
Skanska Talonrakennus Oy, Finland

Owner

Helsinki University Hospital (HUH)
SOK
Finavia

Bathroom modules for the New Children's Hospital in Helsinki

One special and important site for Piikkio Works has been the New Children's Hospital in Helsinki taking care of small patients from all over Finland. SRV Rakennus ordered 117 bathroom elements for the hospital. The official handover of the site to the Hospital District of Helsinki and Uusimaa took place in September 2018.



Oras faucets and showers enable people to make more out of life. We design products that improve the quality of life, both at home and in public spaces.

Oras faucets and shower systems are designed to function in an environmentally friendly and reliable manner for the entire duration of their long life cycles. They are timeless in both form and functionality.



[ORAS.COM](https://oras.com)

CUSTOMIZED CABIN MODULES

The efficient stateroom concept maximises the use of available space, offering a luxurious suite with elaborate features, modest crew cabin or anything in between.

Our prefabricated cabin and bathroom modules suit all kinds of passenger vessels: cruise liners, passenger ferries, fast ferries and river cruise vessels, among others. The high level of customization and variety of design possibilities ensure that every customer's wishes regarding layout, interior design and materials are met.

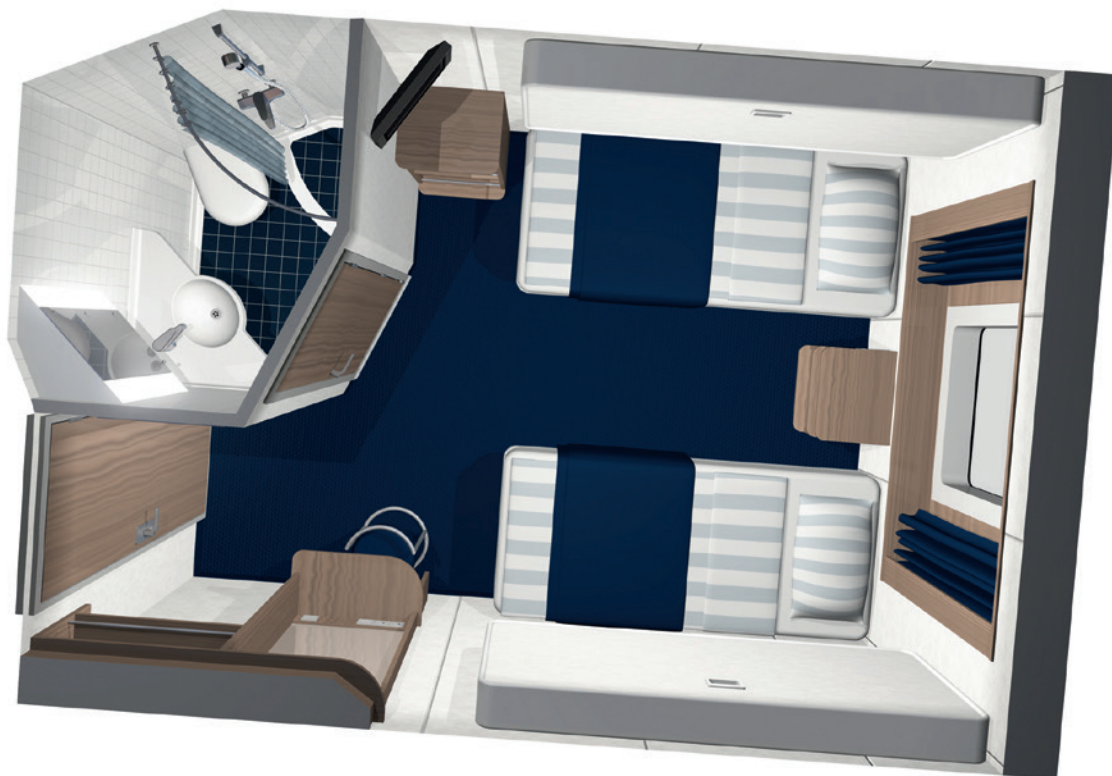
Our own wall and ceiling panel system at the corporate-owned panel production facility in Vilnius, Lithuania, allows us to focus on continuous development of wall and ceiling panel technology, paying special attention to sound reduction and fire safety.

Each cabin module has its own bathroom and fully furnished room area. All systems are pre-equipped and tested at the factory, and piping, HVAC and electrical systems are installed and ready for instant plug-and-play installation onboard the vessel.

High-quality and smart solutions

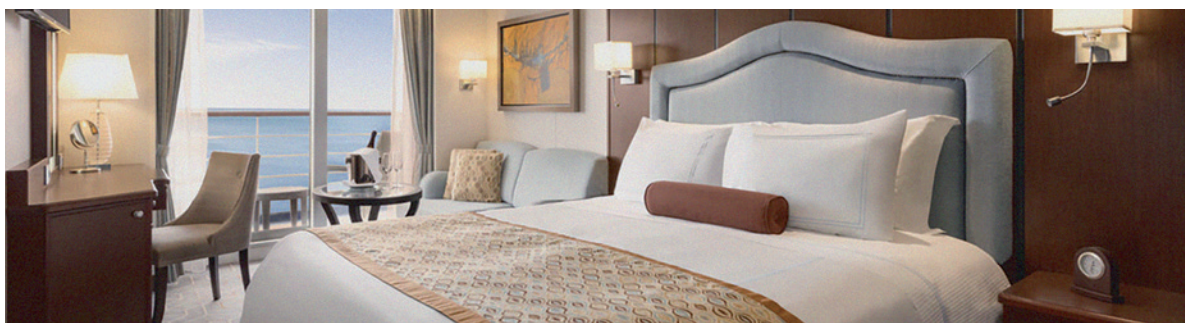
We never compromise on quality, safety or passenger comfort. Our experience is seen in smart solutions underlining easy maintenance and a long lifecycle.





MATERMOLL[®] 1950

Our "made in Italy" mattresses sail all over the world



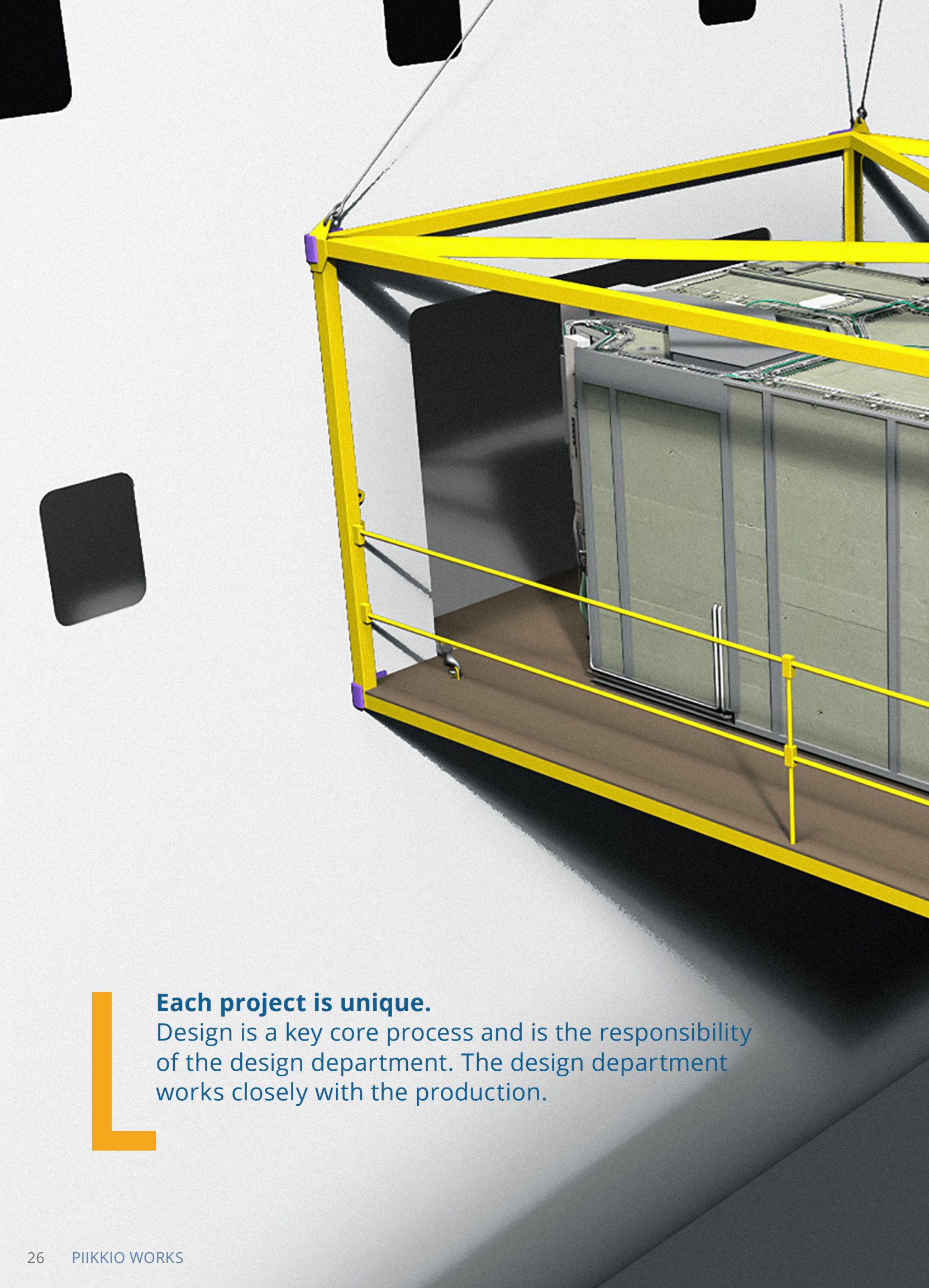
Since 1950 we have been working to improve the quality and comfort of our products; daily research based upon industrial processes and the love of the artisan. In our factory we are active mainly in the scrupulous choice and innovation of materials with a rigid control of quality in such a way that we can assure the final user the best physical awakening.

We think the biggest guarantee is the fact that in over 70 years of business Matermoll has always been under the direct control of the same family. We're proud to say that our mattresses are 100% Made in Italy. We have become the leading supplier in cruise lines business thanks to confidence from customers who find in us the ideal partner.



Matermoll Srl - Via Vecchia Filanda 28
16010 Savignone (Ge) - Italy
ph. +39 010 9642611-21 - fax +39 010 9642631
info@matermoll.com

www.matermoll.com



Each project is unique.

Design is a key core process and is the responsibility of the design department. The design department works closely with the production.



antti

Antti Marine Doors
The new, safe and easy

e-hinge



Antti
E-hinge is
the new online
cabling system
for marine doors.
Easy to install, safe from
damage and invisible from
open to close.



One more reason Antti Marine doors
are in a class of their own.

antti-teollisuus.fi/en/marine | tel. +358 2 774 4700

A modern, compact bathroom interior. On the left, a shower area with a white curtain and a chrome showerhead. In the center, a white toilet. On the right, a white sink with a chrome faucet, a mirror, and a soap dispenser. The walls are white, and the floor is dark. The ceiling has circular lights.

”

In cabin manufacturing, great care is taken when choosing the latest innovations for showers and faucets to ensure sustainable water usage.

WELDING - MACHINING & SURFACE TREATMENT SERVICES

VERSATILE – FLEXIBLE – RELIABLE
KSW Provides High Quality Steel Structures and Machine Parts

ISO9001 and ISO3834 Quality Management Systems
 as well EN 1090-1:2009, EXC1 and EXC2 for the CE marking



EC-Engineering Oy

**Innovative First Class
 Composite Solutions**

www.ec-engineering.fi



HÄFELE

Furniture lighting
 Furniture fitting solutions
 Sliding door fittings
 Locking solutions

Häfele GmbH & Co KG,
Sivuliike Suomessa
 Tupalankatu 4 FI-15680 LAHTI
 Phone +358 (0)3 877 770
info@hafele.fi
www.hafele.fi



Decoration at sea

**DANISH
SHIP
DECOR**

www.shipdecor.dk

TVV

marine lighting

professional marine lighting solutions since 1999

www.tvvmarinelighting.com



ACTIVE SUPPLIER NETWORK

The extensive network includes more than 200 suppliers from Finland and around the world. Cooperation with the suppliers has continued for a long time: some of them have been involved in all cabin projects.

Most of Piikkio Works' partners operate in Finland and the EU, but the most distant suppliers are from China and the United States. Strategically, one of the most important suppliers is a company owned by a group that manufactures wall and ceiling panels in Vilnius, Lithuania.



- Suppliers of bathroom solutions to the maritime industry
- 30 years of manufacturing experience in the bathroom industry
- All products are CE certified

www.imageshowers.com | info@imageshowers.com

MARMOREST

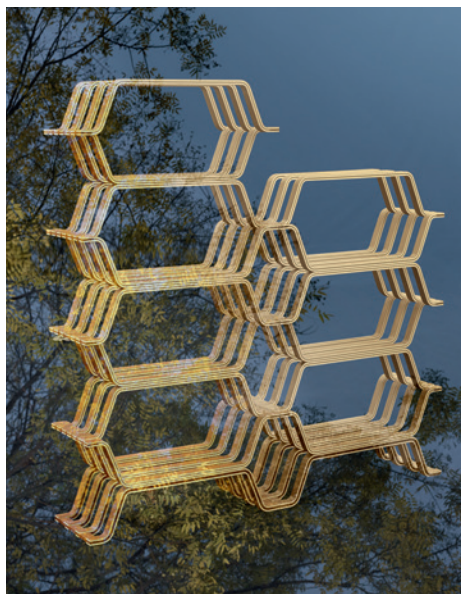
**BASINS AND FURNITURE,
QUALITY AND DELIVERY ASSURANCE**

www.marmorest.com

**SINCE
2000**



#MolteniGroup



MHC.2 BOOKCASE / 1959 — YASUHIKO ITOH
& GIARDINI PUBBLICI, MILANO



D.154.2 ARMCHAIR / 1953-57
& MONTEDORIA BUILDING, MILANO / 1971 — GIO PONTI

HERITA-
GE COL-
LECTION

Molteni@Home
VIRTUAL DESIGN CONSULTANCY AT MOLteni.IT

Molteni & C



HIGH STANDARDS

Piikkio Works' suppliers are known for their high-quality products. The company requires them to commit to the continuous improvement of operations and product quality as well as the right price level. Strict adherence to the material and delivery schedules is also essential, as the flow-driven production model does not allow products to be delivered too late or too early.



More than a hundred suppliers are involved in each project. A well-functioning, cohesive and competitive network is a significant advantage for Piikkio Works.

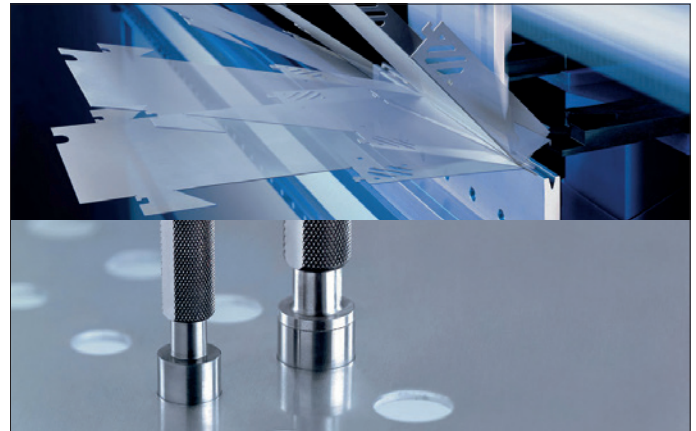
Press systems
– fast and reliable pipe connections

- Metal**
- Copper/Gunmetal
 - Stainless steel
 - CuNiFe
 - Steel, for thick wall pipes

Multilayer

Viega – Connected in quality
www.viega.com | www.viega.fi

viega



Laser sharp subcontracting for industry

Laser cutting
Mild steel 0.5-16 mm
Stainless steel 0.5-10 mm
Aluminium 0.5-6 mm

Turret punch press works
Bending
MIG welding
Assembly works



AIMO VIRTANEN OY

Nuolikatu 3, FI-20760 Piispanristi • Telephone +358 2 2421 666
www.aimovirtanen.fi

INTERESTED IN COOPERATION?

Suppliers of products and product packages play a key role in all projects. The role of reliable and committed suppliers will continue to grow and further intensify cooperation.

Piikkio Works is always interested in suppliers that meet our safety and quality requirements. Would you like to become one of our suppliers and help us handle our projects?



Fill in the form and send it to us!

www.piikkioworks.fi/suppliers



SPECIAL SOLUTIONS AS STANDARD

As the leading shower specialist in the Nordic countries for over 30 years, we are proud to be able to provide you with a completely unique shower space solution. We take our promise of high quality seriously and offer up to 15 years warranty on our products. Sustainability and customer satisfaction are everything to us. We continue to invest in local manufacturing in Sweden for good management of the entire production and quality chain. Next generation's shower solutions and bathroom furniture are here.

Read more at inr.fi

INR
ICONIC
NORDIC
ROOMS



PIIKIO WORKS

FACTORY & WAREHOUSE

Kolamäentie 2
FI-21500 Piikkiö
Finland

OFFICE

Hadvalantie 10 A
FI-21500 Piikkiö
Finland
Tel. +358 10 67010

OUR EMAIL:

firstname.lastname@piikkioworks.fi
www.piikkioworks.fi
www.meyerturku.fi



Vallila Interior



VALLILA CONTRACT provides high quality fabrics, curtains, carpets, wallpapers, curtain and blinder systems and upholstery for furniture to custom-made cabins of Piikkiö Works.

All material are approved by the IMO fire protection standards. Even the most expressive solutions can be pre-installed and tailored to your special needs.

Vallila has a vast range of own collections and works as a agency for various interior brands in Finland.

Vallila Interior is based in Helsinki, Finland but operates worldwide.

More information
www.vallilainterior.com

